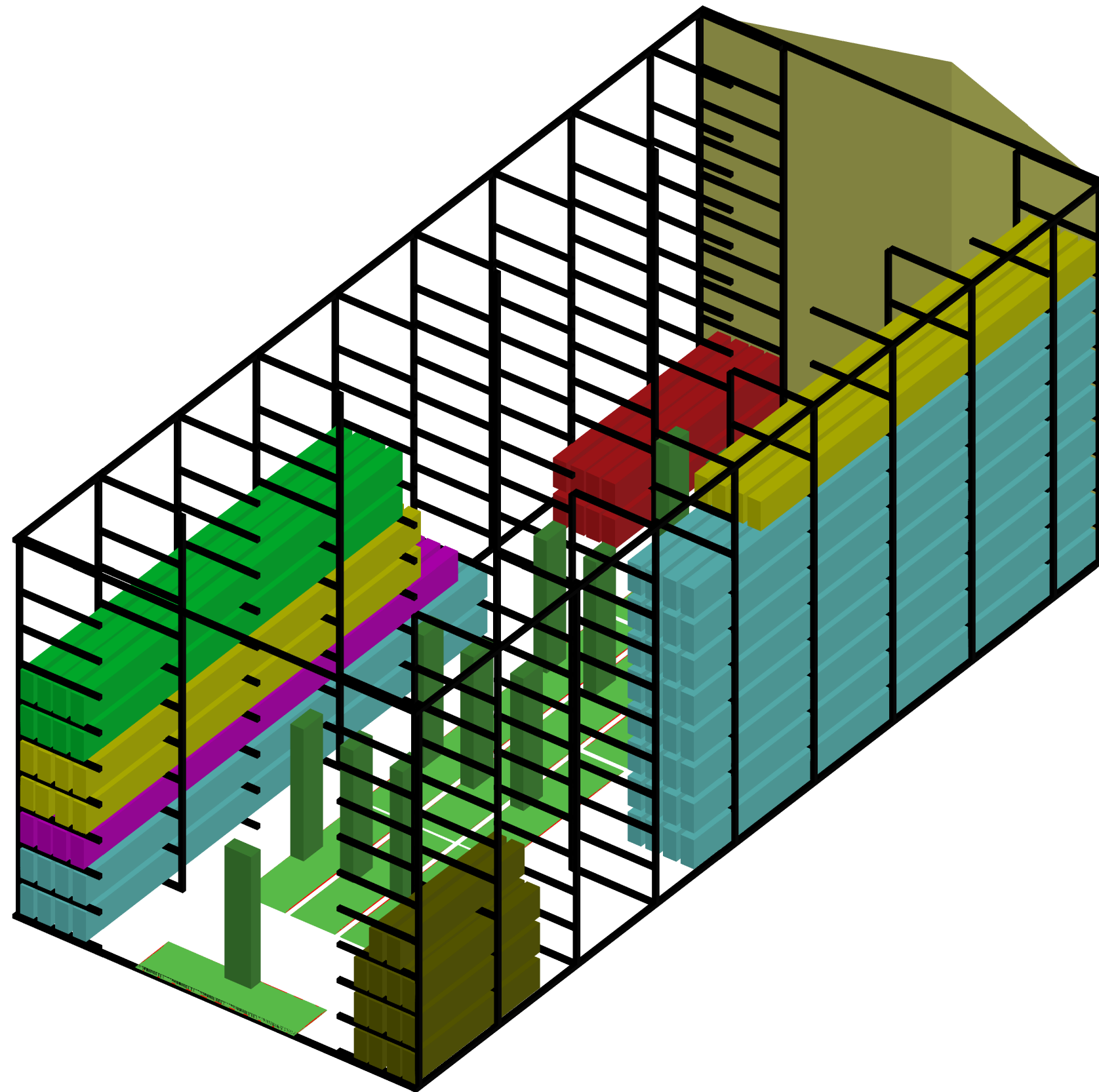


Isometric View

TRAILER#1

COLOR	DESCRIPTION	PIECES	LENGTH (IN.)
LEFT SIDE			
■	L-2, D-20	8	86
■	RG-8	8	62-1/4
■	D-6	4	62
■	RG-3,4,5,6	32	86-1/4
■	D-4	4	58
■	D-5	4	54
■	D-18,19,21	12	50
RIGHT SIDE			
■	D-1,2,3,8,10,11,15,16,17	36	50
■	RG-9,11	16	86-1/4
■	D-13,14,7	12	86
■	RG-7	8	75-1/4



Isometric View

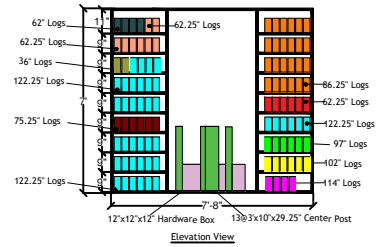
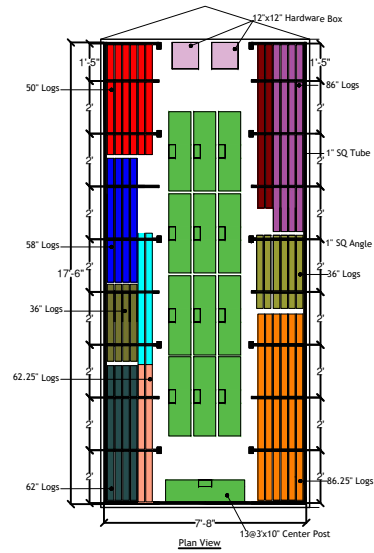
TRAILER#2

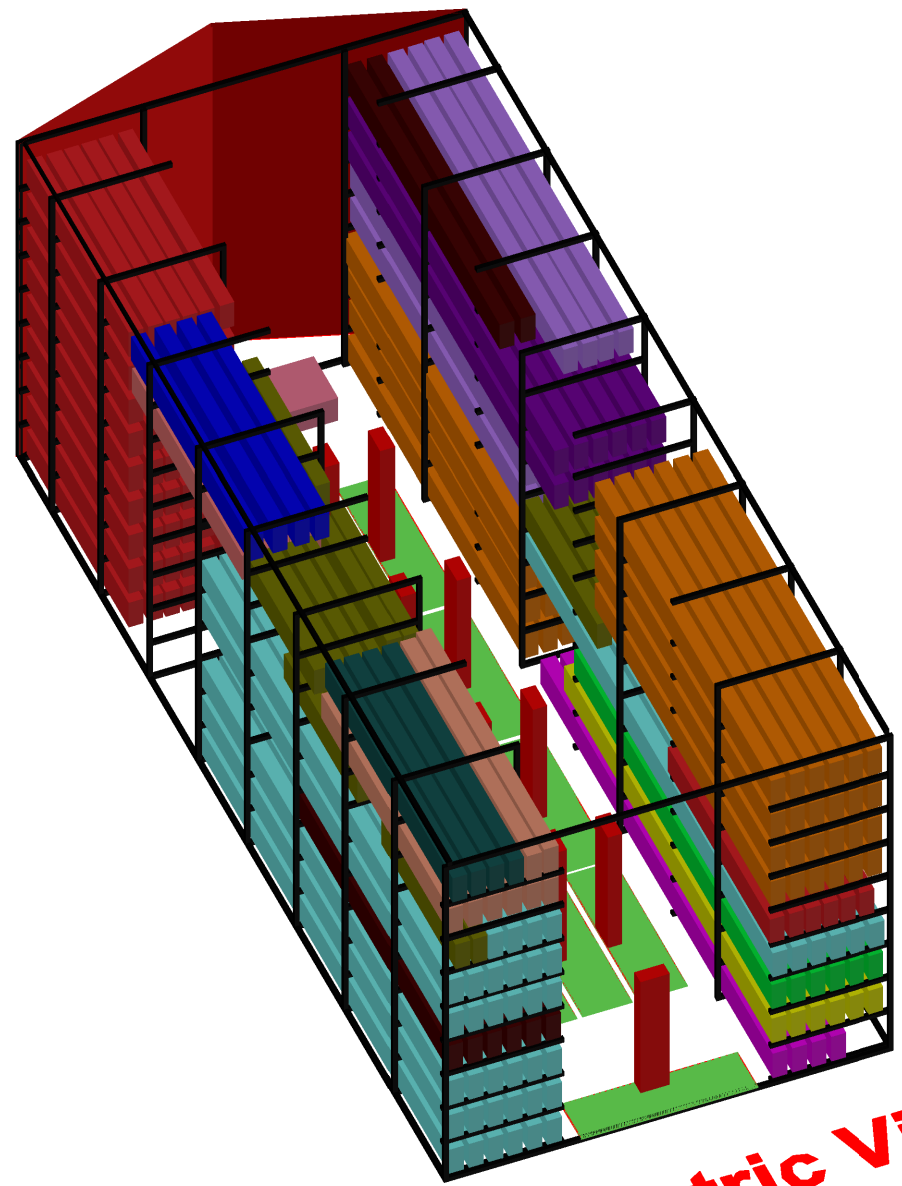
COLOR	DESCRIPTION	PIECES	LENGTH (IN.)
LEFT SIDE			
■	RG-1	8	122-1/4
■	D-12	4	114
■	D-9A,9B	8	102
■	D-9D,9C	8	97
■	D-22,23	8	50
RIGHT SIDE			
■	D-24,25,26	14	36
■	RG-10	4	102
■	RG-14,13,12,2	32	122-1/4

PRE-ENGINEERED REMOVABLE STOP LOGS UNIT MAP

LEGENDS:

- 60" DROP DOWN FLOOD LOGS
- 58" DROP DOWN LOGS
- 0"X36" MID POST
- HARDWARE BOX (MISC. COMPONENTS)
- 62.25" DROP DOWN LOGS
- 62" DROP DOWN LOGS
- 86" DROP DOWN FLOOD LOGS
- 86.25" DROP DOWN LOGS
- 56" DROP DOWN LOGS





Isometric View