

PRICE PROPOSAL

Anthology of Woodland Hills

CONTRACTOR NAME:

DATE:

November 22, 2022

No.	Description	Special notes from Bidder	Material	Labor	Line Subtotal
1.0	General Conditions		\$ 179,790	\$ 162,842	\$ 342,632
8.0	Openings		\$ 2,479,862	\$ 776,981	\$ 3,256,843
	Subtotal		\$ 2,659,652	\$ 939,823	\$ 3,599,475
	Insurance	5%	\$ 132,983	\$ 46,991	\$ 179,974
	Overhead & Profit	10%	\$ 265,965	\$ 93,982	\$ 359,948
	<u>TOTAL BASE BID</u>		\$ 3,058,600	\$ 1,080,797	\$ 4,139,397

Estimate of Materials and Cost of Construction

Date:	22 November 2022
Project:	Anthology of Woodland Hills
Location:	6033 DE Soto Avenue Los Angeles, CA 91367

ITEM #	REF. SHEET	REF. DETAIL	DESCRIPTION	QTY.	UNIT	WASTAGE	QTY W/ WASTAGE	UNIT COST (MATERIAL)	TOTAL COST (MATERIAL)	UNIT COST (LABOR)	TOTAL COST (LABOR)	TOTAL ITEM COST	TRADE COST
01- GENERAL CONDITIONS													\$ 342,632
1			Permits Documentation And Fees	1.0	LS	0%	1	\$0	\$ -	\$32,568	\$ 32,568.43	\$ 32,568	
2			Signage	1.0	LS	0%	1	\$0	\$ -	\$32,568	\$ 32,568.43	\$ 32,568	
3			Temporary Lighting And Power	1.0	LS	0%	1	\$0	\$ -	\$32,568	\$ 32,568.43	\$ 32,568	
4			Hazardous Material Removal	1.0	LS	0%	1	\$0	\$ -	\$32,568	\$ 32,568.43	\$ 32,568	
5			Sales Tax on Material	1.0	LS	0%	1	\$179,790	\$ 179,790.00	\$0	\$ -	\$ 179,790	
6			Material Storage	1.0	LS	0%	1	\$0	\$ -	\$32,568	\$ 32,568.43	\$ 32,568	
08- OPENINGS													\$ 3,256,843
<i>All Levels of Floor Plans</i>													
Door Schedule- Common Areas													
7	A-220-270	A-901	3'-0"x6'-8" Door Type A Material: HM W/ Finish: PTD Frame: HM W/ Finish: PTD Fire Rated: None W/ Hardware Set	30	EA	0%	30		\$ 41,250.00		\$ 16,500.00	\$ 57,750	
8	A-220-270	A-901	3'-0"x6'-8" Door Type J Material: HM W/ Finish: PTD Frame: HM W/ Finish: PTD Fire Rated: 20Mn Glazing: FG-1 W/ Hardware Set	3	EA	0%	3		\$ 4,260.00		\$ 1,650.00	\$ 5,910	
9	A-220-270	A-901	3'-0"x6'-8" Door Type A Material: HM W/ Finish: PTD Frame: HM W/ Finish: PTD Fire Rated: 45Mn W/ Panic Hardware Set	1	EA	0%	1		\$ 1,538.00		\$ 550.00	\$ 2,088	
10	A-220-270	A-901	3'-0"x6'-8" Door Type A Material: HM W/ Finish: PTD Frame: HM W/ Finish: PTD Fire Rated: 45Mn W/ Hardware Set	2	EA	0%	2		\$ 3,076.00		\$ 1,100.00	\$ 4,176	
11	A-220-270	A-901	3'-0"x6'-8" Door Type A Material: HM W/ Finish: PTD Frame: HM W/ Finish: PTD Fire Rated: 90Mn W/ Hardware Set	7	EA	0%	7		\$ 11,088.00		\$ 3,850.00	\$ 14,938	
12	A-220-270	A-901	3'-0"x7'-0" Door Type H Material: HM W/ Finish: PTD Frame: HM W/ Finish: PTD Fire Rated: 20Mn Glazing: FG-1 W/ Hardware Set	2	EA	0%	2		\$ 2,840.00		\$ 1,100.00	\$ 3,940	
13	A-220-270	A-901	6'-0" x 8'-0"H Door Type P Material: STL W/ Finish: FF Frame: STL W/ Finish: FF Fire Rated: None W/ Hardware Set	1	EA	0%	1		\$ 2,796.00		\$ 850.00	\$ 3,646	
14	A-220-270	A-901	6'-0" x 8'-0"H Door Type P Material: STL W/ Finish: FF Frame: STL W/ Finish: FF Fire Rated: 90Mn W/ Hardware Set	1	EA	0%	1		\$ 3,296.00		\$ 850.00	\$ 4,146	
15	A-220-270	A-901	3'-0"x6'-8" Door Type A Material: SCW W/ Finish: PTD Frame: STL W/ Finish: PTD Fire Rated: None W/ Hardware Set	8	EA	0%	8		\$ 11,160.00		\$ 3,040.00	\$ 14,200	
16	A-220-270	A-901	3'-0"x6'-8" Door Type F Material: HM W/ Finish: PTD Frame: HM W/ Finish: PTD Fire Rated: None W/ Hardware Set	5	EA	0%	5		\$ 6,875.00		\$ 2,750.00	\$ 9,625	
17	A-220-270	A-901	2'-6"x6'-8" Door Type A Material: HM W/ Finish: PTD Frame: HM W/ Finish: PTD Fire Rated: None W/ Hardware Set	1	EA	0%	1		\$ 1,182.00		\$ 550.00	\$ 1,732	

18	A-220-270	A-901	3'-0"x6'-8" Door Type F Material: SCW W/ Finish: PTD Frame: STL W/ Finish: PTD Fire Rated: None Glazing: TP-1 W/ Hardware Set	13	EA	0%	13		\$ 18,135.00		\$ 4,940.00	\$ 23,075
19	A-220-270	A-901	3'-0"x6'-8" Door Type A Material: SCW W/ Finish: PTD Frame: STL W/ Finish: PTD Fire Rated: 45Mn W/ Hardware Set	1	EA	0%	1		\$ 1,395.00		\$ 380.00	\$ 1,775
20	A-220-270	A-901	3'-0"x6'-8" Door Type J Material: HM W/ Finish: PTD Frame: HM W/ Finish: PTD Fire Rated: None Glazing:TIG-1 W/ Hardware Set	1	EA	0%	1		\$ 1,375.00		\$ 550.00	\$ 1,925
21	A-220-270	A-901	3'-0"x7'-0" Door Type A Material: HM W/ Finish: PTD Frame: HM W/ Finish: PTD Fire Rated: None W/ Hardware Set	1	EA	0%	1		\$ 1,375.00		\$ 550.00	\$ 1,925
22	A-220-270	A-901	3'-0"x7'-0" Door Type J Material: HM W/ Finish: PTD Frame: HM W/ Finish: PTD Fire Rated: None Glazing: TP-1 W/ Hardware Set	1	EA	0%	1		\$ 1,375.00		\$ 550.00	\$ 1,925
23	A-220-270	A-901	3'-0"x6'-8" Door Type A Material: SCW W/ Finish: PTD Frame: STL W/ Finish: PTD Fire Rated: 20Mn W/ Hardware Set	45	EA	0%	45		\$ 62,775.00		\$ 17,100.00	\$ 79,875
24	A-220-270	A-901	3'-0"x6'-8" Door Type A Material: SCW W/ Finish: PTD Frame: STL W/ Finish: PTD Fire Rated: 20Mn Glazing: TP-1 W/ Hardware Set	1	EA	0%	1		\$ 1,395.00		\$ 380.00	\$ 1,775
25	A-220-270	A-901	3'-0"x6'-8" Door Type A Material: SCW W/ Finish: PTD Frame: STL W/ Finish: PTD Fire Rated: 45Mn W/ Hardware Set	6	EA	0%	6		\$ 8,370.00		\$ 2,280.00	\$ 10,650
26	A-220-270	A-901	3'-0"x6'-8" Door Type F Material: SCW W/ Finish: PTD Frame: STL W/ Finish: PTD Fire Rated: 20Mn Glazing: FG-1 W/ Hardware Set	12	EA	0%	12		\$ 16,740.00		\$ 4,560.00	\$ 21,300
27	A-220-270	A-901	3'-0"x6'-8" Door Type A Material: SCW W/ Finish: PTD Frame: STL W/ Finish: PTD Fire Rated: 20Mn Glazing: FG-1 W/ Hardware Set	1	EA	0%	1		\$ 1,395.00		\$ 380.00	\$ 1,775
28	A-220-270	A-901	3'-0"x6'-8" Door Type F Material: HM W/ Finish: PTD Frame: HM W/ Finish: PTD Fire Rated: None Glazing: TIG-1 W/ Hardware Set	1	EA	0%	1		\$ 1,375.00		\$ 550.00	\$ 1,925
29	A-220-270	A-901	3'-0"x6'-8" Door Type J Material: SCW W/ Finish: PTD Frame: STL W/ Finish: PTD Fire Rated: 45Mn Glazing: FG-1 W/ Hardware Set	4	EA	0%	4		\$ 6,152.00		\$ 2,200.00	\$ 8,352
30	A-220-270	A-901	3'-0"x6'-8" Door Type J Material: SCW W/ Finish: PTD Frame: STL W/ Finish: PTD Fire Rated: None Glazing: TP-1 W/ Hardware Set	3	EA	0%	3		\$ 4,185.00		\$ 1,140.00	\$ 5,325
31	A-220-270	A-901	3'-0"x6'-8" Door Type J Material: SCW W/ Finish: PTD Frame: STL W/ Finish: PTD Fire Rated: 20Mn Glazing: FG-1 W/ Hardware Set	10	EA	0%	10		\$ 13,950.00		\$ 3,800.00	\$ 17,750
32	A-220-270	A-901	3'-0"x6'-8" Door Type F Material: HM W/ Finish: PTD Frame: HM W/ Finish: PTD Fire Rated: None Glazing: TIG-1 W/ Hardware Set	1	EA	0%	1		\$ 1,375.00		\$ 550.00	\$ 1,925
33	A-220-270	A-901	3'-0"x6'-8" Door Type F Material: WD W/ Finish: PTD Frame: STL W/ Finish: PTD Fire Rated: None Glazing: TP-1 W/ Hardware Set	1	EA	0%	1		\$ 1,395.00		\$ 380.00	\$ 1,775
34	A-220-270	A-901	3'-0"x6'-8" Door Type F Material: SCW W/ Finish: PTD Frame: STL W/ Finish: PTD Fire Rated: 20Mn Glazing: TP-1 W/ Hardware Set	1	EA	0%	1		\$ 1,395.00		\$ 380.00	\$ 1,775

35	A-220-270	A-901	3'-0"x6'-8" Door Type J Material: SCW W/ Finish: PTD Frame: STL W/ Finish: PTD Fire Rated: 90Mn Glazing: FG-1 W/ Hardware Set	20	EA	0%	20		\$ 27,900.00		\$ 7,600.00	\$ 35,500
36	A-220-270	A-901	3'-0"x6'-8" Door Type J Material: HM W/ Finish: PTD Frame: HM W/ Finish: PTD Fire Rated: 90Mn Glazing:FG-1 W/ Hardware Set	2	EA	0%	2		\$ 3,168.00		\$ 1,100.00	\$ 4,268
37	A-220-270	A-901	3'-2"x7'-0" Barn Door Type Q Material: SCW W/ Finish: PTD Frame: STL W/ Finish: PTD Fire Rated: None W/ Hardware Set W/ Barn Door Track W/ Floor Mounted Guide	3	EA	0%	3		\$ 4,350.00		\$ 1,650.00	\$ 6,000
38	A-220-270	A-901	8'-0"x10'-0" Overhead Coiling Door Type P Material: STL W/ Finish: FF Frame: STL W/ Finish: FF Fire Rated: None W/ Hardware Set	1	EA	0%	1		\$ 4,500.00		\$ 1,250.00	\$ 5,750
39	A-220-270	A-901	25'-0"x14'-0" Door Type P Material: STL W/ Finish: FF Frame: STL W/ Finish: FF Fire Rated: None W/ Hardware Set	1	EA	0%	1		\$ 17,500.00		\$ 5,500.00	\$ 23,000
			Door Schedule- All Floor Units									
40	A-721-739	A-720	U01- (3'-0"x7'-0") Type C; M: SCW; PTD Finish W/ PTD Steel Frame Type 2	190	EA	0%	190		\$ 265,050.00		\$ 72,200.00	\$ 337,250
41	A-721-739	A-720	U02- (3'-0"x7'-0") Type F M: VYL; PTD Finish W/ PTD VYL Frame	95	EA	0%	95		\$ 38,760.00		\$ 47,880.00	\$ 86,640
42	A-721-739	A-720	U03- (3'-0"x6'-8") Type A M: HCW; PTD Finish; W/ PTD Wood Frame Type WI	181	EA	0%	181		\$ 220,820.00		\$ 68,780.00	\$ 289,600
43	A-721-739	A-720	U04- (3'-0"x6'-8") Type A M: HCW; PTD Finish; W/ PTD Wood Frame Type WI	124	EA	0%	124		\$ 151,280.00		\$ 47,120.00	\$ 198,400
44	A-721-739	A-720	U06- (3'-0"x6'-8") Type A M: HCW; PTD Finish; W/ PTD Wood Frame Type WI	279	EA	0%	279		\$ 340,380.00		\$ 106,020.00	\$ 446,400
45	A-721-739	A-720	U06a- (2'-0"x6'-8") Type A M: HCW; PTD Finish; W/ PTD Wood Frame Type WI	4	EA	0%	4		\$ 3,400.00		\$ 1,400.00	\$ 4,800
46	A-721-739	A-720	U06b- (2'-6"x6'-8") Type A M: HCW; PTD Finish; W/ PTD Wood Frame Type WI	25	EA	0%	25		\$ 26,250.00		\$ 8,750.00	\$ 35,000
47	A-721-739	A-720	U06c- (2'-6"x6'-8") Type A M: HCW; PTD Finish; W/ PTD Wood Frame Type WI	4	EA	0%	4		\$ 4,200.00		\$ 1,400.00	\$ 5,600
48	A-721-739	A-720	U10- (3'-0"x6'-8") Type K M: HCW; PTD Finish; W/ PTD Wood Frame Type WI	61	EA	0%	61		\$ 74,420.00		\$ 23,180.00	\$ 97,600
49	A-721-739	A-720	U10a- (2'-6"x6'-8") Type K M: HCW; PTD Finish; W/ PTD Wood Frame Type WI	19	EA	0%	19		\$ 19,950.00		\$ 6,650.00	\$ 26,600
50	A-721-739	A-720	U10b- (2'-10"x6'-8") Type K M: HCW; PTD Finish; W/ PTD Wood Frame Type WI	51	EA	0%	51		\$ 60,180.00		\$ 17,850.00	\$ 78,030
51	A-721-739	A-720	U10c- (2'-8"x6'-8") Type K M: HCW; PTD Finish; W/ PTD Wood Frame Type WI	11	EA	0%	11		\$ 11,550.00		\$ 3,850.00	\$ 15,400
52	A-721-739	A-720	U11- (2'-6"x6'-8") Type A M: HCW; PTD Finish; W/ PTD Wood Frame Type WI	22	EA	0%	22		\$ 23,100.00		\$ 7,700.00	\$ 30,800
53	A-721-739	A-720	U12- ((2)2'-6"x6'-8") Type A M: HCW; PTD Finish; W/ PTD Wood Frame Type WI	9	EA	0%	9		\$ 16,650.00		\$ 4,950.00	\$ 21,600
54	A-721-739	A-720	U20- (3'-2"x6'-8") Type A M: HCW; PTD Finish	98	EA	0%	98		\$ 139,160.00		\$ 37,240.00	\$ 176,400
			Hardwares									
55	A-220-270	A-901	Smoke Labeled Sign @ Door	6	EA	0%	6		\$ 90.00		\$ 60.00	\$ 150
56	A-220-270	A-901	Panic Hardware	1	EA	0%	1		\$ 350.00		\$ 60.00	\$ 410
57	A-220-270	A-901	Magnetic Hold Open Devices	14	EA	0%	14		\$ 6,314.00		\$ 910.00	\$ 7,224

Window												
Level 2 Floor Plan												
58	A-220	A-921	B1 - Window Type 8'-0" x 6'-0" Insulated Low E Glass Unit 1" Thick	30	EA	0%	30		\$ 64,800.00		\$ 19,500.00	\$ 84,300
59	A-220	A-921	D1 - Window Type 4'-0" x 2'-6" Insulated Low E Glass Unit 1" Thick	2	EA	0%	2		\$ 900.00		\$ 300.00	\$ 1,200
60	A-220	A-921	A2 - Window Type 6'-0" x 6'-0" Insulated Low E Glass Unit 1" Thick	16	EA	0%	16		\$ 25,920.00		\$ 7,200.00	\$ 33,120
61	A-220	A-921	A1 - Window Type 5'-0" x 6'-0" Insulated Low E Glass Unit 1" Thick	1	EA	0%	1		\$ 1,350.00		\$ 450.00	\$ 1,800
62	A-220	A-921	B6 - Window Type 6'-0" x 6'-0" Insulated Low E Glass Unit 1" Thick	2	EA	0%	2		\$ 3,240.00		\$ 900.00	\$ 4,140
63	A-220	A-921	B3 - Window Type 8'-0" x 6'-0" Insulated Low E Glass Unit 1" Thick	2	EA	0%	2		\$ 4,320.00		\$ 1,300.00	\$ 5,620
64	A-220	A-921	C1 - Window Type 3'-0" x 6'-0" Insulated Low E Glass Unit 1" Thick	2	EA	0%	2		\$ 1,620.00		\$ 500.00	\$ 2,120
Level 3 Floor Plan												
65	A-230	A-921	B1 - Window Type 8'-0" x 6'-0" Insulated Low E Glass Unit 1" Thick	23	EA	0%	23		\$ 49,680.00		\$ 14,950.00	\$ 64,630
66	A-230	A-921	A2 - Window Type 6'-0" x 6'-0" Insulated Low E Glass Unit 1" Thick	41	EA	0%	41		\$ 66,420.00		\$ 18,450.00	\$ 84,870
67	A-230	A-921	D1 - Window Type 4'-0" x 2'-6" Insulated Low E Glass Unit 1" Thick	2	EA	0%	2		\$ 900.00		\$ 300.00	\$ 1,200
68	A-230	A-921	C1 - Window Type 3'-0" x 6'-0" Insulated Low E Glass Unit 1" Thick	2	EA	0%	2		\$ 1,620.00		\$ 500.00	\$ 2,120
69	A-230	A-921	D2 - Window Type 3'-0" x 6'-0" Insulated Low E Glass Unit 1" Thick	2	EA	0%	2		\$ 1,620.00		\$ 500.00	\$ 2,120
70	A-230	A-921	B3 - Window Type 8'-0" x 6'-0" Insulated Low E Glass Unit 1" Thick	2	EA	0%	2		\$ 4,320.00		\$ 1,300.00	\$ 5,620
7	A-230	A-921	B4 - Window Type 8'-0" x 6'-0" Insulated Low E Glass Unit 1" Thick	4	EA	0%	4		\$ 8,640.00		\$ 2,600.00	\$ 11,240
71	A-230	A-921	B6 - Window Type 8'-0" x 6'-0" Insulated Low E Glass Unit 1" Thick	4	EA	0%	4		\$ 8,640.00		\$ 2,600.00	\$ 11,240
Level 4 Floor Plan												
72	A-240	A-921	B1 - Window Type 8'-0" x 6'-0" Insulated Low E Glass Unit 1" Thick	23	EA	0%	23		\$ 49,680.00		\$ 14,950.00	\$ 64,630
73	A-240	A-921	A2 - Window Type 6'-0" x 6'-0" Insulated Low E Glass Unit 1" Thick	41	EA	0%	41		\$ 66,420.00		\$ 18,450.00	\$ 84,870
74	A-240	A-921	D1 - Window Type 4'-0" x 2'-6" Insulated Low E Glass Unit 1" Thick	2	EA	0%	2		\$ 900.00		\$ 300.00	\$ 1,200
75	A-240	A-921	C1 - Window Type 3'-0" x 6'-0" Insulated Low E Glass Unit 1" Thick	2	EA	0%	2		\$ 1,620.00		\$ 500.00	\$ 2,120
12	A-240	A-921	D2 - Window Type 3'-0" x 6'-0" Insulated Low E Glass Unit 1" Thick	2	EA	0%	2		\$ 1,620.00		\$ 500.00	\$ 2,120
76	A-240	A-921	B3 - Window Type 8'-0" x 6'-0" Insulated Low E Glass Unit 1" Thick	2	EA	0%	2		\$ 4,320.00		\$ 1,300.00	\$ 5,620
77	A-240	A-921	B4 - Window Type 8'-0" x 6'-0" Insulated Low E Glass Unit 1" Thick	4	EA	0%	4		\$ 8,640.00		\$ 2,600.00	\$ 11,240
78	A-240	A-921	B6 - Window Type 8'-0" x 6'-0" Insulated Low E Glass Unit 1" Thick	4	EA	0%	4		\$ 8,640.00		\$ 2,600.00	\$ 11,240
Level 5 Floor Plan												
79	A-250	A-921	B1 - Window Type 8'-0" x 6'-0" Insulated Low E Glass Unit 1" Thick	23	EA	0%	23		\$ 49,680.00		\$ 14,950.00	\$ 64,630
80	A-250	A-921	A2 - Window Type 6'-0" x 6'-0" Insulated Low E Glass Unit 1" Thick	41	EA	0%	41		\$ 66,420.00		\$ 18,450.00	\$ 84,870
19	A-250	A-921	D1 - Window Type 4'-0" x 2'-6" Insulated Low E Glass Unit 1" Thick	2	EA	0%	2		\$ 900.00		\$ 300.00	\$ 1,200
81	A-250	A-921	C1 - Window Type 3'-0" x 6'-0" Insulated Low E Glass Unit 1" Thick	2	EA	0%	2		\$ 1,620.00		\$ 500.00	\$ 2,120
82	A-250	A-921	D2 - Window Type 3'-0" x 6'-0" Insulated Low E Glass Unit 1" Thick	2	EA	0%	2		\$ 1,620.00		\$ 500.00	\$ 2,120
83	A-250	A-921	B3 - Window Type 8'-0" x 6'-0" Insulated Low E Glass Unit 1" Thick	2	EA	0%	2		\$ 4,320.00		\$ 1,300.00	\$ 5,620
84	A-250	A-921	B4 - Window Type 8'-0" x 6'-0" Insulated Low E Glass Unit 1" Thick	4	EA	0%	4		\$ 8,640.00		\$ 2,600.00	\$ 11,240
85	A-250	A-921	B6 - Window Type 8'-0" x 6'-0" Insulated Low E Glass Unit 1" Thick	4	EA	0%	4		\$ 8,640.00		\$ 2,600.00	\$ 11,240
Level 6 Floor Plan												

26	A-260	A-921	B1 - Window Type 8'-0" x 6'-0" Insulated Low E Glass Unit 1" Thick	23	EA	0%	23		\$ 49,680.00		\$ 14,950.00	\$ 64,630	
86	A-260	A-921	A2 - Window Type 6'-0" x 6'-0" Insulated Low E Glass Unit 1" Thick	41	EA	0%	41		\$ 66,420.00		\$ 18,450.00	\$ 84,870	
87	A-260	A-921	D1 - Window Type 4'-0" x 2'-6" Insulated Low E Glass Unit 1" Thick	2	EA	0%	2		\$ 900.00		\$ 300.00	\$ 1,200	
88	A-260	A-921	C1 - Window Type 3'-0" x 6'-0" Insulated Low E Glass Unit 1" Thick	2	EA	0%	2		\$ 1,620.00		\$ 500.00	\$ 2,120	
89	A-260	A-921	D2 - Window Type 3'-0" x 6'-0" Insulated Low E Glass Unit 1" Thick	2	EA	0%	2		\$ 1,620.00		\$ 500.00	\$ 2,120	
90	A-260	A-921	B3 - Window Type 8'-0" x 6'-0" Insulated Low E Glass Unit 1" Thick	2	EA	0%	2		\$ 4,320.00		\$ 1,300.00	\$ 5,620	
91	A-260	A-921	B4 - Window Type 8'-0" x 6'-0" Insulated Low E Glass Unit 1" Thick	4	EA	0%	4		\$ 8,640.00		\$ 2,600.00	\$ 11,240	
33	A-260	A-921	B6 - Window Type 8'-0" x 6'-0" Insulated Low E Glass Unit 1" Thick	4	EA	0%	4		\$ 8,640.00		\$ 2,600.00	\$ 11,240	
			Level 7 Floor Plan										
92	A-270	A-921	B1 - Window Type 8'-0" x 6'-0" Insulated Low E Glass Unit 1" Thick	8	EA	0%	8		\$ 17,280.00		\$ 5,200.00	\$ 22,480	
93	A-270	A-921	A2 - Window Type 6'-0" x 6'-0" Insulated Low E Glass Unit 1" Thick	25	EA	0%	25		\$ 40,500.00		\$ 11,250.00	\$ 51,750	
94	A-270	A-921	B2 - Window Type 8'-0" x 6'-0" Insulated Low E Glass Unit 1" Thick	9	EA	0%	9		\$ 19,440.00		\$ 5,850.00	\$ 25,290	
95	A-270	A-921	A11 - Window Type 5'-0" x 6'-0" Insulated Low E Glass Unit 1" Thick	4	EA	0%	4		\$ 5,400.00		\$ 1,800.00	\$ 7,200	
96	A-270	A-921	D1 - Window Type 4'-0" x 2'-6" Insulated Low E Glass Unit 1" Thick	1	EA	0%	1		\$ 450.00		\$ 150.00	\$ 600	
58	A-270	A-921	C1 - Window Type 3'-0" x 6'-0" Insulated Low E Glass Unit 1" Thick	1	EA	0%	1		\$ 810.00		\$ 250.00	\$ 1,060	
97	A-270	A-921	D2 - Window Type 3'-0" x 6'-0" Insulated Low E Glass Unit 1" Thick	2	EA	0%	2		\$ 1,620.00		\$ 500.00	\$ 2,120	
98	A-270	A-921	B3 - Window Type 8'-0" x 6'-0" Insulated Low E Glass Unit 1" Thick	2	EA	0%	2		\$ 4,320.00		\$ 1,300.00	\$ 5,620	
99	A-270	A-921	B4 - Window Type 8'-0" x 6'-0" Insulated Low E Glass Unit 1" Thick	4	EA	0%	4		\$ 8,640.00		\$ 2,600.00	\$ 11,240	
100	A-270	A-921	B6 - Window Type 8'-0" x 6'-0" Insulated Low E Glass Unit 1" Thick	4	EA	0%	4		\$ 8,640.00		\$ 2,600.00	\$ 11,240	
			Trims										
101	A-220-270	A-901	Door Trim Painted	1725	LF	0%	1,725		\$ 7,072.50		\$ 2,397.75	\$ 9,470	
102	A-220-270	A-901	Window Trim Painted	1132	LF	0%	1,132		\$ 3,339.40		\$ 1,573.48	\$ 4,913	
SUB TOTAL									\$ 2,659,652		\$ 939,823	\$ 3,599,475	\$ 3,599,475
INSURANCE									5%	\$ 132,983	\$ 46,991	\$ 179,974	\$ 179,974
OVERHEAD AND PROFIT									10%	\$ 265,965	\$ 93,982	\$ 359,948	\$ 359,948
TOTAL BASE BID									\$ 3,058,600		\$ 1,080,797	\$ 4,139,397	\$ 4,139,397

- Level 2 Floor Plan 1.0
- B1 - Window Type 8'-0" x 6'-0" Insulated Low E Glass Unit 1" Thick 30.0
- D1 - Window Type 4'-0" x 2'-6" Insulated Low E Glass Unit 1" Thick 2.0
- A2 - Window Type 6'-0" x 6'-0" Insulated Low E Glass Unit 1" Thick 16.0
- B6 - Window Type 6'-0" x 6'-0" Insulated Low E Glass Unit 1" Thick 2.0
- A1 - Window Type 5'-0" x 6'-0" Insulated Low E Glass Unit 1" Thick 1.0
- C1 - Window Type 3'-0" x 6'-0" Insulated Low E Glass Unit 1" Thick 2.0
- B3 - Window Type 8'-0" x 6'-0" Insulated Low E Glass Unit 1" Thick 2.0

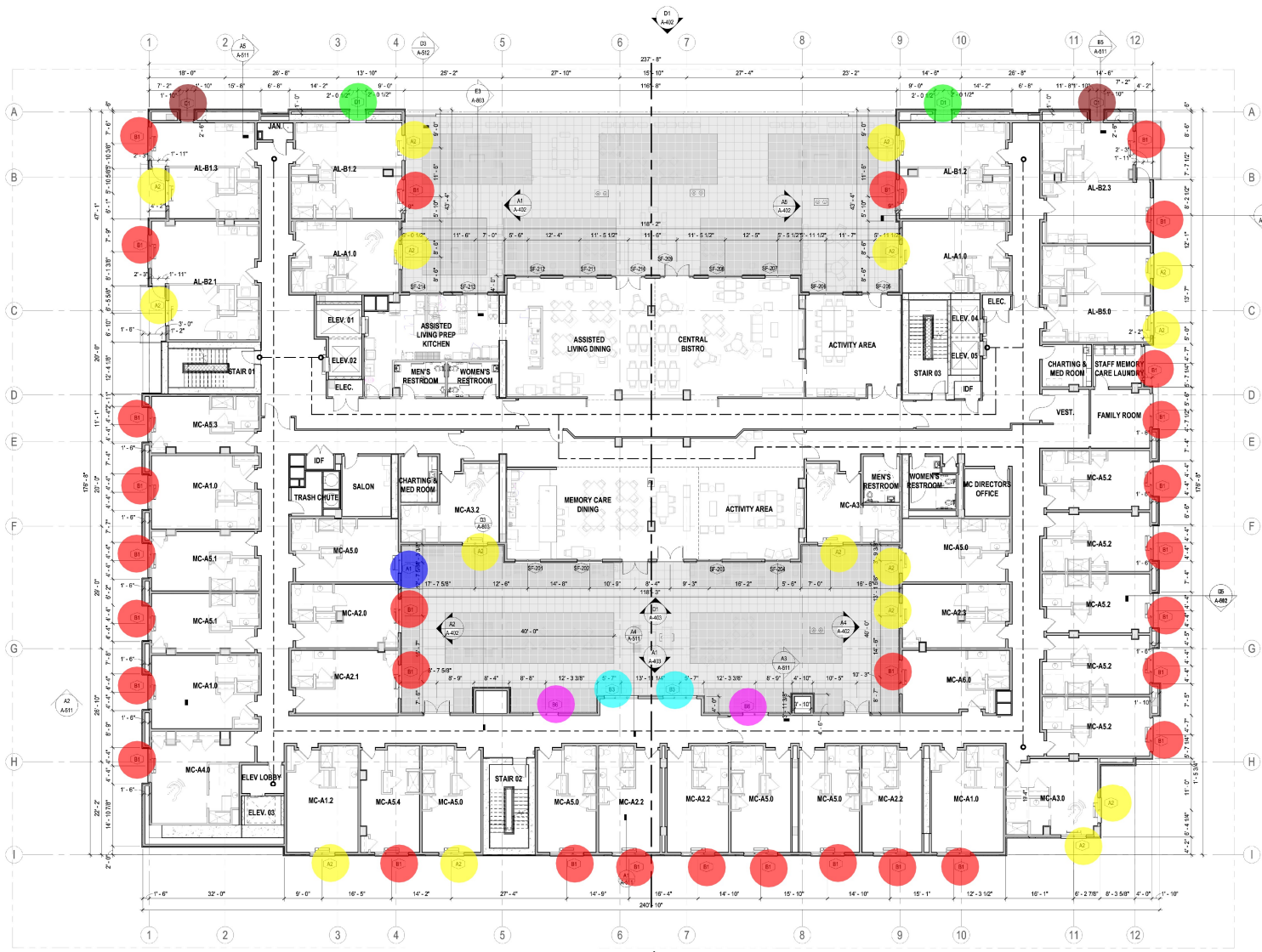
ACCESSIBILITY LEGEND

- ACCESSIBLE ROUTE COMPLYING WITH SECTION 1108A, 1108A, AND 1110A WHERE APPLICABLE
- ACCESSIBLE PARKING AND DRIVE TO COMPLY WITH SECTION 1108A
- ACCESSIBLE ROUTEPATH AT ENLARGED PLAN VIEWS COMPLYING WITH 1106A AND 1108A
- NO PARKING STRIPING FOR ACCESSIBLES AND OTHER LOCATIONS AS INDICATED TO COMPLY WITH SECTION 11B-602 AND 11B-903
- INTERNATIONAL SYMBOL OF ACCESSIBILITY TO COMPLY WITH SECTIONS 11B-703.7.2 AND 11B-502.6
- PROVIDING VISIBLE ALARMS AT THE DESIGNATED UNITS IN ACCORDANCE WITH LABC SECTION 907.5.2.3.2

**FOR TYPE, COUNT AND DISTRIBUTION OF PARKING SPACES RE: SHEETS A-201, A-202, A-211, AND A-212 FOR PARKING SCHEDULE.

ANTHOLOGY OF WOODLAND HILLS

6033 DE SOTO AVENUE
LOS ANGELES, CA 91367



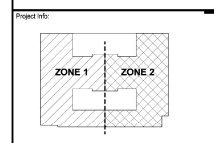
Revisions:

Item	No.	Date	Description

Project Status:

Issue /	date
PERMIT SET	07/09/2021
50% CONSTRUCTION DOCUMENTS	05/26/2021
DESIGN DEVELOPMENT PRICING SET	04/16/2021

Scale:



LBA Project #	2021.06
Date:	07/09/2021
Drawn by:	Author
Checked by:	Checker

OVERALL FLOOR PLAN - LEVEL 02

Sheet Number:

A-220

NOTE: These documents are instruments of professional service, and information contained herein is to be used in accordance with the contract documents. No reproduction or distribution of these documents in whole or in part without Lantz-Boggio's consent is in violation of common law, copyright, statutory and other reserved rights. Refer to A-111 S.C. per 301 (18).
7/9/2021 4:40:14 PM

A1 LEVEL 02 OVERALL FLOOR PLAN

- Level 3 Floor Plan 1.0
- B1 - Window Type 8'-0" x 6'-0" Insulated Low E Glass Uni... 23.0
- D1 - Window Type 4'-0" x 2'-6" Insulated Low E Glass Unit... 2.0
- A2 - Window Type 6'-0" x 6'-0" Insulated Low E Glass Uni... 41.0
- D2 - Window Type 3'-0" x 6'-0" Insulated Low E Glass Unit... 2.0
- C1 - Window Type 3'-0" x 6'-0" Insulated Low E Glass Unit... 2.0
- B4 - Window Type 8'-0" x 6'-0" Insulated Low E Glass Unit... 4.0
- B3 - Window Type 8'-0" x 6'-0" Insulated Low E Glass Unit... 2.0
- B6 - Window Type 8'-0" x 6'-0" Insulated Low E Glass Unit... 4.0

ACCESSIBILITY LEGEND

- ACCESSIBLE ROUTE COMPLYING WITH SECTION 1108A, 1108A, AND 1110A WHERE APPLICABLE
- ACCESSIBLE PARKING AND DRIVE TO COMPLY WITH SECTION 1108A
- ACCESSIBLE ROUTE/PATH AT ENLARGED PLAN VIEWS COMPLYING WITH 1106A AND 1108A
- NO PARKING STRIPING FOR ACCESSIBLES AND OTHER LOCATIONS AS INDICATED TO COMPLY WITH SECTION 11B-602 AND 11B-903
- INTERNATIONAL SYMBOL OF ACCESSIBILITY TO COMPLY WITH SECTIONS 11B-703.7.2 AND 11B-502.6

**FOR TYPE, COUNT AND DISTRIBUTION OF PARKING SPACES RE: SHEETS A-201, A-202, A-211, AND A-212 FOR PARKING SCHEDULE

PROVIDING VISIBLE ALARMS AT THE DESIGNATED UNITS IN ACCORDANCE WITH LABC SECTION 907.5.2.3.2

ANTHOLOGY OF WOODLAND HILLS

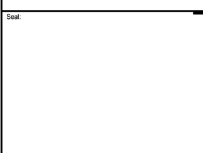
6033 DE SOTO AVENUE
LOS ANGELES, CA 91367

Revisions:

Item	No.	Date	Description

Project Status:

Issue /	date
PERMIT SET	07/09/2021
50% CONSTRUCTION DOCUMENTS	05/09/2021
DESIGN DEVELOPMENT PRICING SET	04/16/2021



Project Info:

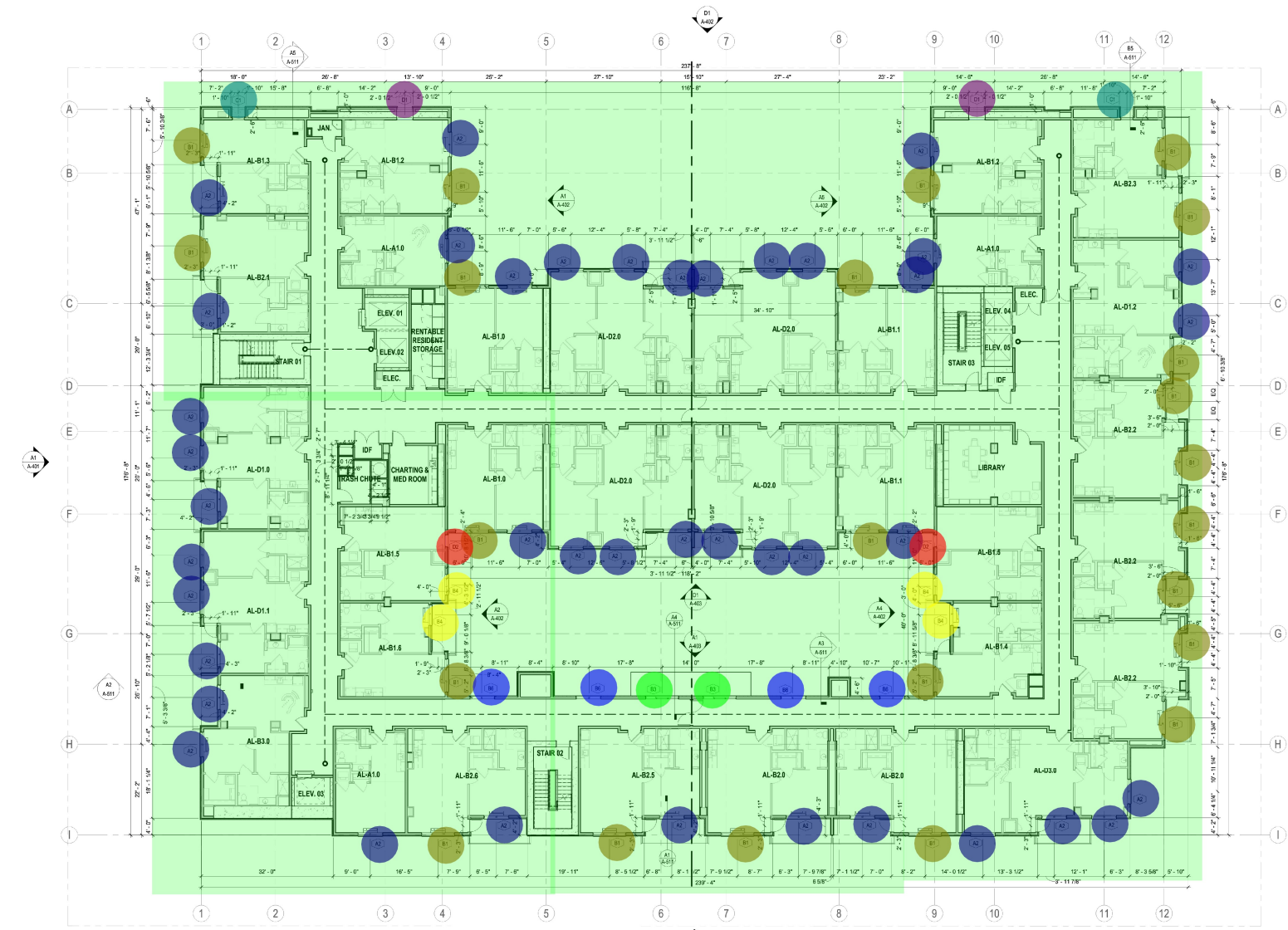
LBA Project #	2021.06
Date	07/09/2021
Drawn by:	Author
Checked by:	Checker

OVERALL FLOOR PLAN - LEVEL 03

Sheet Number:

A-230

NOTE: These documents are instruments of professional service, and information contained herein is to be used for the project and site only. It is not to be used for any other project or site. All rights are reserved. No part of these documents may be reproduced, stored in a retrieval system, or transmitted in any form or by any means, electronic, mechanical, photocopying, recording, or by any information storage and retrieval system, without the prior written permission of Lantz-Boggio Architects & Interior Designers.



1 LEVEL 03
3/8" = 1'-0"

- Level 4 Floor Plan 1.0
- B1 - Window Type 8'-0" x 6'-0" Insulated Low E Glass U... 23.0
- A2 - Window Type 6'-0" x 6'-0" Insulated Low E Glass U... 41.0
- D1 - Window Type 4'-0" x 2'-6" Insulated Low E Glass U... 2.0
- C1 - Window Type 3'-0" x 6'-0" Insulated Low E Glass U... 2.0
- D2 - Window Type 3'-0" x 6'-0" Insulated Low E Glass U... 2.0
- B3 - Window Type 8'-0" x 6'-0" Insulated Low E Glass U... 2.0
- B6 - Window Type 8'-0" x 6'-0" Insulated Low E Glass U... 4.0
- B4 - Window Type 8'-0" x 6'-0" Insulated Low E Glass U... 4.0

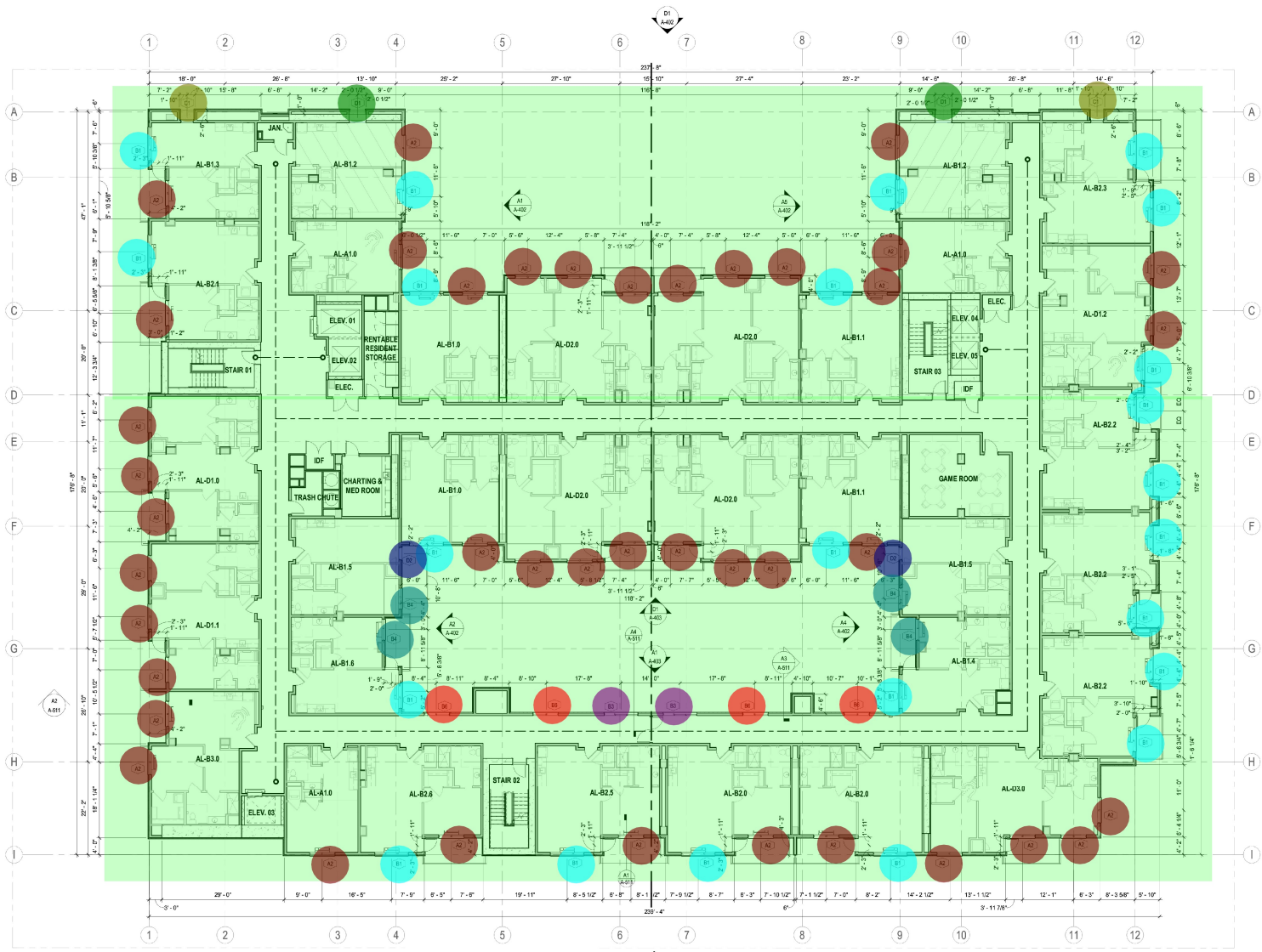
ACCESSIBILITY LEGEND

- ACCESSIBLE ROUTE COMPLYING WITH SECTION 1108A, 1108A, AND 1110A WHERE APPLICABLE
- ACCESSIBLE PARKING AND DRIVE TO COMPLY WITH SECTION 1108A
- ACCESSIBLE ROUTE/PATH AT ENLARGED PLAN VIEWS COMPLYING WITH 1106A AND 1108A
- NO PARKING STRIPING FOR ACCESSIBLES AND OTHER LOCATIONS AS INDICATED TO COMPLY WITH SECTION 11B-602 AND 11B-903
- INTERNATIONAL SYMBOL OF ACCESSIBILITY TO COMPLY WITH SECTIONS 11B-703.7.2 AND 11B-502.6
- PROVIDING VISIBLE ALARMS AT THE DESIGNATED UNITS IN ACCORDANCE WITH LABC SECTION 907.5.2.3.2

****FOR TYPE, COUNT AND DISTRIBUTION OF PARKING SPACES RE: SHEETS A-201, A-202, A-211, AND A-212 FOR PARKING SCHEDULE.**

ANTHOLOGY OF WOODLAND HILLS

6033 DE SOTO AVENUE
LOS ANGELES, CA 91367



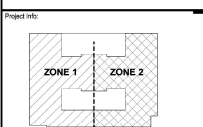
Revisions:

Item	No.	Date	Description

Project Status:

Issue /	date
PERMIT SET	07/09/2021
50% CONSTRUCTION DOCUMENTS	05/09/2021
DESIGN DEVELOPMENT PRICING SET	04/16/2021

Seal:



LBA Project #	2021.06
Date:	07/09/2021
Drawn by:	Author
Checked by:	Checker

OVERALL FLOOR PLAN - LEVEL 04

Sheet Number:

A-240

NOTE: These documents are instruments of professional service, and information contained herein is to be used for the project and site only. It is not to be used for any other project or site. All rights reserved. Lantz-Boggio Architects & Interior Designers, Inc. is not responsible for any errors or omissions in these documents. Use of reproductions of these documents in whole or in part without Lantz-Boggio's consent is a violation of common law, copyright, statutory and other reserved rights. Refer to A-111.5.C. for 301 (B)(6).
 7/9/2021 14:45 PM
 Plot Date / Time Stamp

- **Level 5 Floor Plan** 1.0 ●
- **B1 - Window Type 8'-0" x 6'-0" Insulated Low E Glass ...** 23.0 ●
- **D1 - Window Type 4'-0" x 2'-6" Insulated Low E Glass U...** 2.0 ●
- **A2 - Window Type 6'-0" x 6'-0" Insulated Low E Glass ...** 41.0 ●
- **D2 - Window Type 3'-0" x 6'-0" Insulated Low E Glass U...** 2.0 ●
- **C1 - Window Type 3'-0" x 6'-0" Insulated Low E Glass U...** 2.0 ●
- **B4 - Window Type 8'-0" x 6'-0" Insulated Low E Glass U...** 4.0 ●
- **B3 - Window Type 8'-0" x 6'-0" Insulated Low E Glass U...** 2.0 ●
- **B6 - Window Type 8'-0" x 6'-0" Insulated Low E Glass U...** 4.0 ●

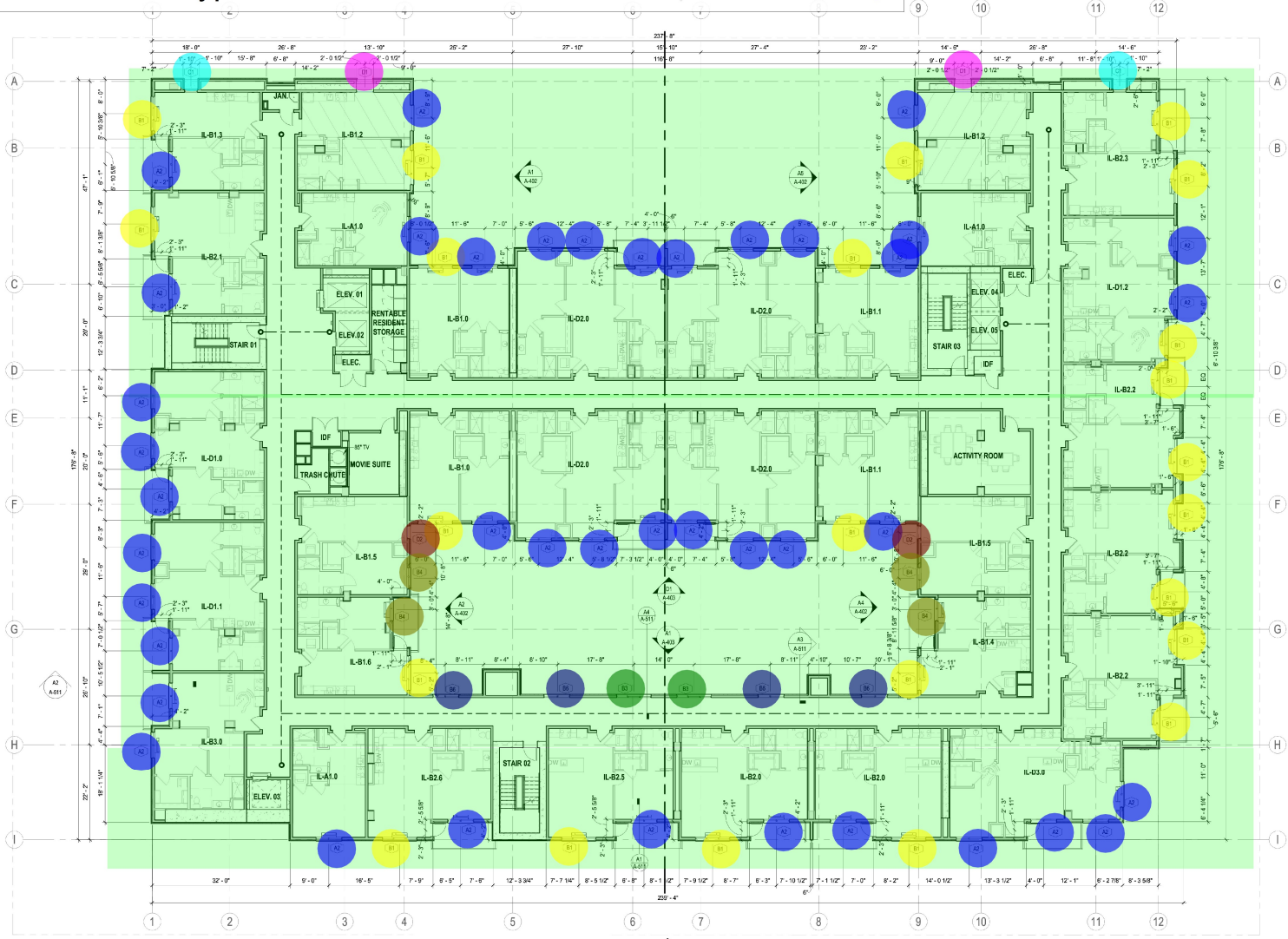
ACCESSIBILITY LEGEND

- ACCESSIBLE ROUTE COMPLYING WITH SECTION 1108A, 1108A, AND 1110A, WHERE APPLICABLE
- ACCESSIBLE PARKING AND DRIVE TO COMPLY WITH SECTION 1108A
- ACCESSIBLE ROUTEPATH AT ENLARGED PLAN VIEWS COMPLYING WITH 1106A AND 1108A
- NO PARKING STRIPING FOR ACCESSIBLES AND OTHER LOCATIONS AS INDICATED TO COMPLY WITH SECTION 11B-602 AND 11B-903
- INTERNATIONAL SYMBOL OF ACCESSIBILITY TO COMPLY WITH SECTIONS 11B-703.7.2 AND 11B-502.6
- PROVIDING VISIBLE ALARMS AT THE DESIGNATED UNITS IN ACCORDANCE WITH LABC SECTION 907.5.2.3.2

**FOR TYPE, COUNT AND DISTRIBUTION OF PARKING SPACES RE: SHEETS A-201, A-202, A-211, AND A-212 FOR PARKING SCHEDULE.

ANTHOLOGY OF WOODLAND HILLS

6033 DE SOTO AVENUE
LOS ANGELES, CA 91367



Revisions:

Item	No.	Date	Description

Project Status:

Issue /	Date
PERMIT SET	07/09/2021
50% CONSTRUCTION DOCUMENTS	05/09/2021
DESIGN DEVELOPMENT PRICING SET	04/16/2021

Scale: _____

Project info:

LBA Project #	2021.05
Date:	07/09/2021
Drawn by:	Author
Checked by:	Checker

Sheet Name:

OVERALL FLOOR PLAN - LEVEL 05

Sheet Number:

NOTE: These documents are instruments of professional service, and information contained herein is to be used for the project and site only. No part of this document is to be reproduced or transmitted in any form or by any means electronic, mechanical, photocopying, recording, or by any information storage and retrieval system, without the prior written consent of Lantz-Boggio Architects & Interior Designers. Use or reproduction of these documents in whole or in part without Lantz-Boggio's consent is a violation of common law, copyright, and other reserved rights. Refer to A-111 U.S.C. sec. 301 (1998), which prescribes date and time of first recording of a document. 7/9/2021 4:42:17 PM

A1 LEVEL 05 OVERALL FLOOR PLAN ●

- Level 6 Floor Plan 1.0
- B1 - Window Type 8'-0" x 6'-0" Insulated Low E Glass U... 23.0
- A2 - Window Type 6'-0" x 6'-0" Insulated Low E Glass U... 41.0
- D1 - Window Type 4'-0" x 2'-6" Insulated Low E Glass U... 2.0
- C1 - Window Type 3'-0" x 6'-0" Insulated Low E Glass U... 2.0
- D2 - Window Type 3'-0" x 6'-0" Insulated Low E Glass U... 2.0
- B3 - Window Type 8'-0" x 6'-0" Insulated Low E Glass U... 2.0
- B6 - Window Type 8'-0" x 6'-0" Insulated Low E Glass U... 4.0
- B4 - Window Type 8'-0" x 6'-0" Insulated Low E Glass U... 4.0

ACCESSIBILITY LEGEND

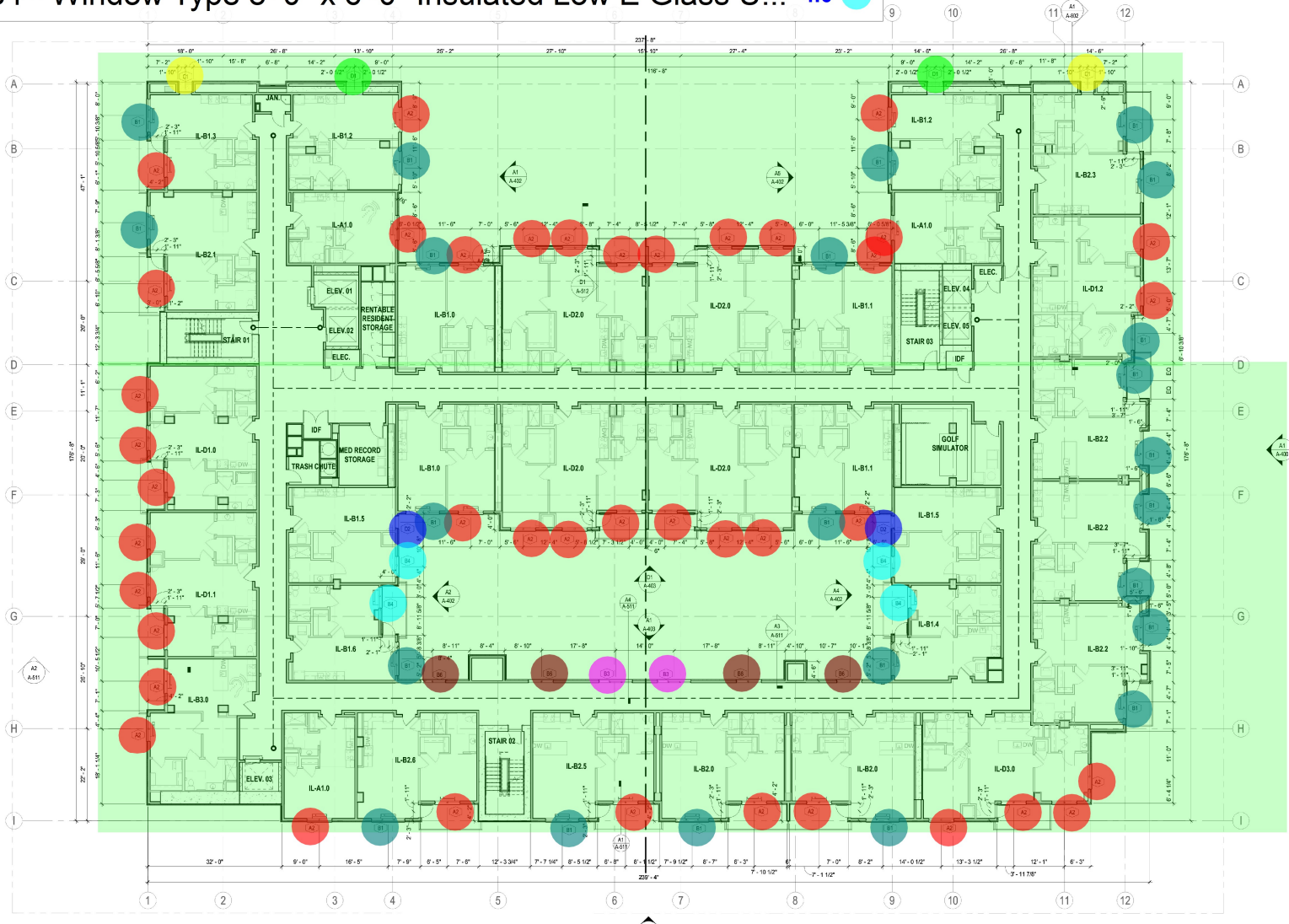
- ACCESSIBLE ROUTE COMPLYING WITH SECTION 1106A, 1108A, AND 1110A WHERE APPLICABLE
- ACCESSIBLE PARKING AND DRIVE TO COMPLY WITH SECTION 1108A
- ACCESSIBLE ROUTE/PATH AT ENLARGED PLAN VIEWS COMPLYING WITH 1106A AND 1108A
- NO PARKING STRIPING FOR ACCESSIBLES AND OTHER LOCATIONS AS INDICATED TO COMPLY WITH SECTION 11B-802 AND 11B-903
- INTERNATIONAL SYMBOL OF ACCESSIBILITY TO COMPLY WITH SECTIONS 11B-703.7.2 AND 11B-502.6
- PROVIDING VISIBLE ALARMS AT THE DESIGNATED UNITS IN ACCORDANCE WITH LABC SECTION 907.5.2.3.2

**FOR TYPE, COUNT AND DISTRIBUTION OF PARKING SPACES RE: SHEETS A-201, A-202, A-211, AND A-212 FOR PARKING SCHEDULE

LANTZ-BOGGIO
Architects & Interior Designers
1860 DTC Plaza, Suite 200 | Englewood, CO 80111 | Ph: 303.773.0430

ANTHOLOGY OF WOODLAND HILLS

6033 DE SOTO AVENUE
LOS ANGELES, CA 91367



NOTICE: These documents are instruments of professional service, and information contained herein is intended to be used in conjunction with Lantz-Boggio's representations, drawings, observations and advisements. Use or reproduction of these documents in whole or in part without Lantz-Boggio's consent is a violation of common law, copyright, statutory and other reserved rights. Refer to A-111 (I.C.G. part 30) (189).

7/9/2021 4:42:48 PM

Revisions:

Item	No.	Date	Description

Project Status:

Issue / date

PERMIT SET 07/09/2021

50% CONSTRUCTION DOCUMENTS 09/09/2021

DESIGN DEVELOPMENT PRICING SET 04/16/2021

Scale:

Zone info:

LBA Project # 2021.06

Date: 07/09/2021

Drawn by: Author

Checked by: Checker

A1 LEVEL 06 OVERALL FLOOR PLAN 3/82" = 1'-0"

NOTE: These documents are instruments of professional service, and information contained herein is to be used for the project only. No part of these documents may be reproduced, stored in a retrieval system, or transmitted in any form or by any means, electronic, mechanical, photocopying, recording, or by any information storage and retrieval system, without the prior written permission of Lantz-Boggio Architects & Interior Designers. Refer to A1111.1 (S.C. 600.01) for more information. 7/20/2021 4:43:31 PM

- Level 7 Floor Plan 1.0 ●
- B1 - Window Type 8'-0" x 6'-0" Insulated Low E Glass Unit ... 8.0 ●
- B2 - Window Type 8'-0" x 6'-0" Insulated Low E Glass Unit ... 9.0 ●
- A2 - Window Type 6'-0" x 6'-0" Insulated Low E Glass Unit... 25.0 ●
- D1 - Window Type 4'-0" x 2'-6" Insulated Low E Glass Unit ... 1.0 ●
- A11 - Window Type 5'-0" x 6'-0" Insulated Low E Glass Unit... 4.0 ●
- D2 - Window Type 3'-0" x 6'-0" Insulated Low E Glass Unit ... 2.0 ●
- C1 - Window Type 3'-0" x 6'-0" Insulated Low E Glass Unit ... 1.0 ●
- B4 - Window Type 8'-0" x 6'-0" Insulated Low E Glass Unit ... 4.0 ●
- B3 - Window Type 8'-0" x 6'-0" Insulated Low E Glass Unit ... 2.0 ●
- B6 - Window Type 8'-0" x 6'-0" Insulated Low E Glass Unit ... 4.0 ●

ACCESSIBILITY LEGEND

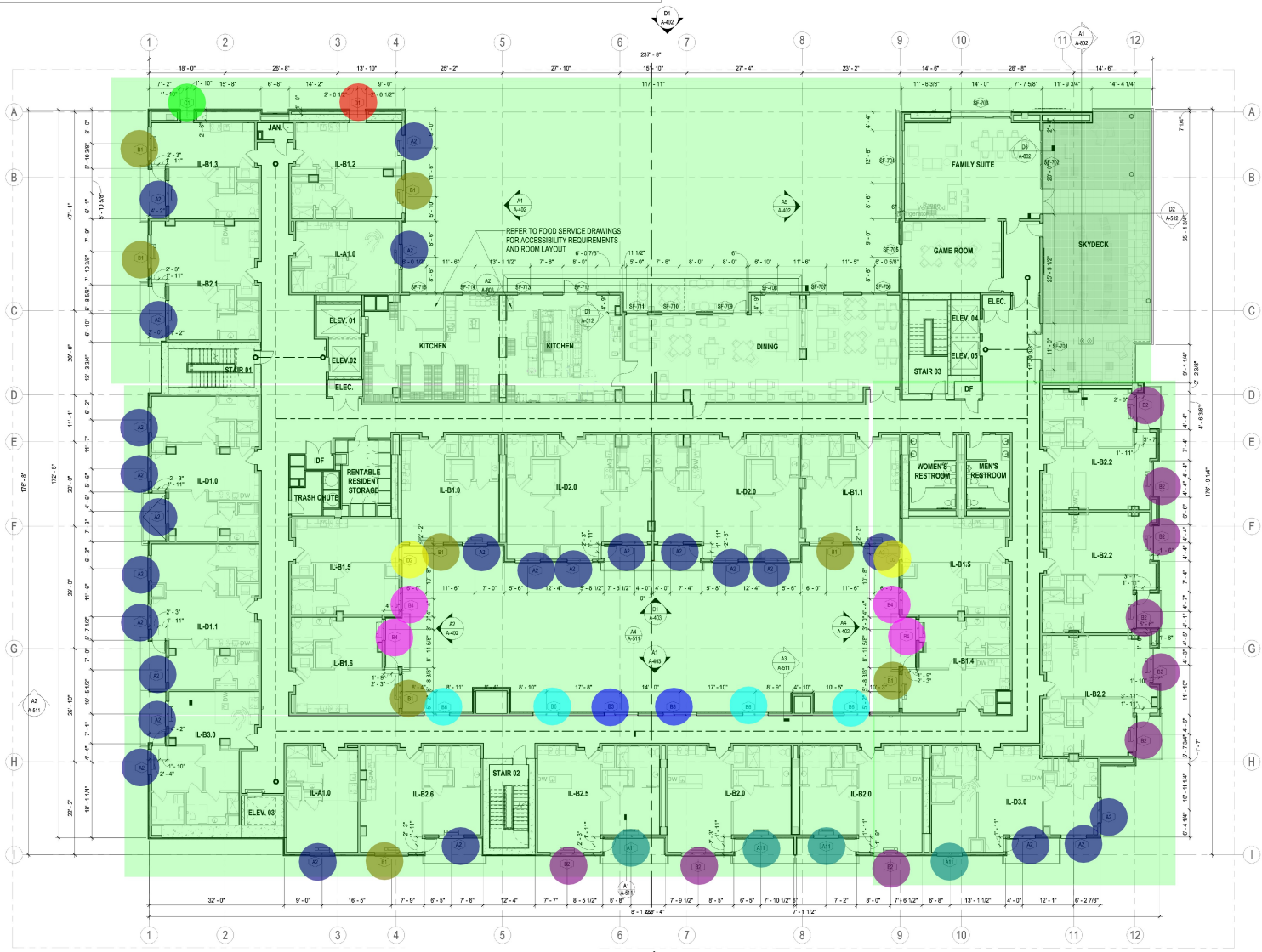
- ACCESSIBLE ROUTE COMPLYING WITH SECTION 1108A, 1108A, AND 1110A WHERE APPLICABLE
- ACCESSIBLE PARKING AND DRIVE TO COMPLY WITH SECTION 1108A
- ACCESSIBLE ROUTE/PATH AT ENLARGED PLAN VIEWS COMPLYING WITH 1106A AND 1108A
- NO PARKING STRIPING FOR ACCESSIBLES AND OTHER LOCATIONS AS INDICATED TO COMPLY WITH SECTION 11B-602 AND 11B-903
- INTERNATIONAL SYMBOL OF ACCESSIBILITY TO COMPLY WITH SECTIONS 11B-703.7.2 AND 11B-502.6
- PROVIDING VISIBLE ALARMS AT THE DESIGNATED UNITS IN ACCORDANCE WITH LABC SECTION 907.5.2.3.2

**FOR TYPE, COUNT AND DISTRIBUTION OF PARKING SPACES RE: SHEETS A-201, A-202, A-211, AND A-212 FOR PARKING SCHEDULE.

LANTZ-BOGGIO
Architects & Interior Designers
5805 DTC Pkwy., Suite 200 | Englewood, CO 80111 | Ph. 303.773.0430

ANTHOLOGY OF WOODLAND HILLS

6033 DE SOTO AVENUE
LOS ANGELES, CA 91367



Revisions:

Item	No.	Date	Description

Project Status:

Issue /	date
PERMIT SET	07/09/2021
50% CONSTRUCTION DOCUMENTS	05/09/2021
DESIGN DEVELOPMENT PRICING SET	04/16/2021

Seal:

Project Info:

LBA Project # _____

Date: 07/09/2021

Drawn by: _____

Checked by: _____

2021.06

Author

Checker

A1 LEVEL 07 OVERALL FLOOR PLAN

Overall Floor Plan - Level 07

A-270

NOTE: These documents are instruments of professional service, and information contained herein is to be used for the specific project and site only. It is to be used in accordance with the contract documents. No part of these documents may be reproduced, stored in a retrieval system, or transmitted in any form or by any means, electronic, mechanical, photocopying, recording, or by any information storage and retrieval system, without the prior written consent of Lantz-Boggio Architects & Interior Designers.

KEYNOTE LEGEND	
KEYNOTE NUMBER	KEYNOTE TEXT
10.01A	MELAMINE SHELF WITH ROD - TYPE A (12")
10.01B	FIXED MELAMINE SHELVING (6" DEEP SHELVES, PAINTED, RE: SHEET A-681)
10.01C	BATHROOM FAHRE MECHANICAL
10.01D	30" W x 4" ACCESS PANEL
10.01E	WALL MOUNTED CLOSET FIXTURE

LANTZ-BOGGIO
 Architects & Interior Designers
 5805 DTC Plwy., Suite 200 | Englewood, CO 80111 | Ph: 303.773.0430

Architect

Engineer

Interior Designer

Structural Engineer

MEP Engineer

Construction Manager

General Contractor

Construction Administrator

Construction Inspector

Construction Photographer

Construction Scheduler

Construction Superintendent

Construction Safety Officer

Construction Quality Control

Construction Materials Testing

Construction Environmental Monitoring

Construction Traffic Management

Construction Security

Construction Signage

Construction Public Relations

Construction Legal Counsel

Construction Insurance

Construction Bonding

Construction Financing

Construction Accounting

Construction Payroll

Construction Procurement

Construction Contract Administration

Construction Dispute Resolution

Construction Arbitration

Construction Litigation

Construction Mediation

Construction Conciliation

Construction Negotiation

Construction Dispute Avoidance

Construction Dispute Prevention

Construction Dispute Resolution Services

ANTHOLOGY OF WOODLAND HILLS

6033 DE SOTO AVENUE
 LOS ANGELES, CA 91367

Revisions:

Item	No.	Date	Description

Project Status:

Issue /	Date
PERMIT SET	07/09/2021
50% CONSTRUCTION DOCUMENTS	05/26/2021
DESIGN DEVELOPMENT PRICING SET	04/16/2021

Scale:

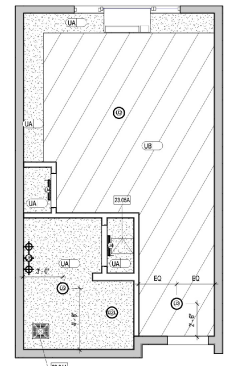
LBA Project # 2021.06
 Date: 07/09/2021
 Drawn by: Author
 Checked by: Checker

Sheet Name:
**ENLARGED PLANS -
 INTERIOR ELEVATIONS -
 MC**

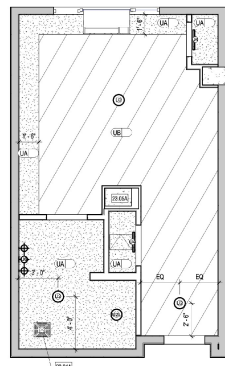
Sheet Number:

A-722

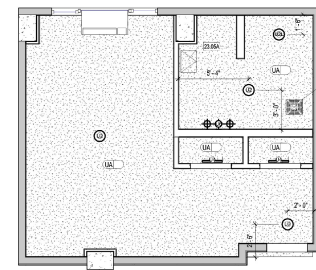
- MC-A2.2 Unit Type=EAX3 0.0
- U20 1.0
- U11 1.0
- U6 1.0
- U01 1.0
- U11 1.0
- MC-A2.3 Unit Type 0.0
- U06 1.0
- U04 1.0
- U01 1.0
- MC-A3.0 Unit Type 0.0
- U20 1.0
- U06 2.0
- U01 1.0



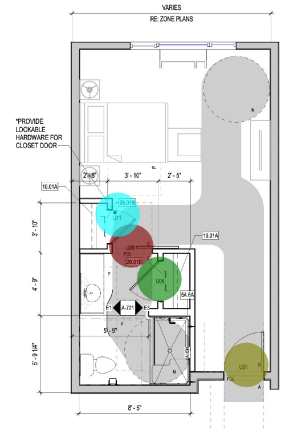
C1 UNIT MC-A2.2 RCP
1/4" = 1'-0"



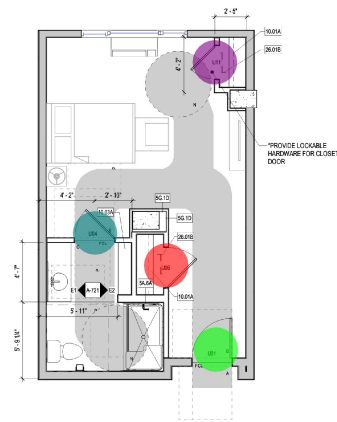
C3 UNIT MC-A2.3 RCP
1/4" = 1'-0"



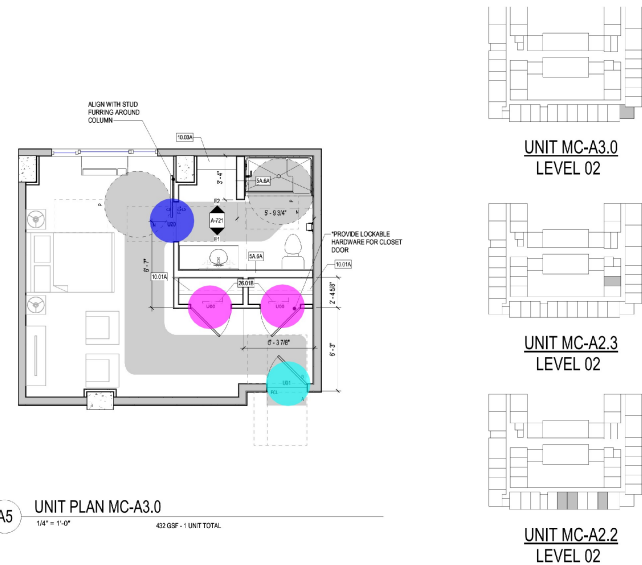
C5 UNIT MC-A3.0 RCP
1/4" = 1'-0"



A1 UNIT PLAN MC-A2.2
1/4" = 1'-0" MC-A2.2 - 330 GSF - 1 UNITS TOTAL



A3 UNIT PLAN MC-A2.3
1/4" = 1'-0" 410 GSF - 1 UNITS TOTAL

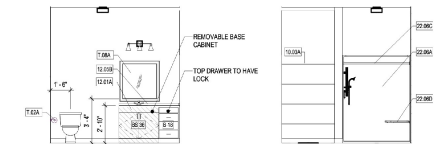


A5 UNIT PLAN MC-A3.0
1/4" = 1'-0" 430 GSF - 1 UNIT TOTAL

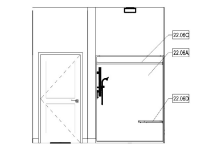
NOTE: These documents are instruments of professional service, and shall remain the property of Lantz-Boggio Architects & Interior Designers. No reproduction or distribution of these documents in whole or in part without Lantz-Boggio's consent is in violation of common law, copyright, statutory and other reserved rights. Refer to A-1 (11.5.23) for more information. Lantz-Boggio Architects & Interior Designers, 1111 11th Street, Suite 200, Los Angeles, CA 90015.

KEYNOTE LEGEND	
KEYNOTE NUMBER	KEYNOTE TEXT
10.01A	MELAMINE SHELF WITH ROD - TYPE A (12")
10.02A	FIXED MELAMINE SHELVING (6" DEEP SHELF) PAINTED. RE: SHEET A-881
12.01A	WOOD CABINETRY RE: INTERIOR FINISH SCHEDULE
12.02B	QUARTZ COUNTERTOP RE: INTERIOR FINISH SCHEDULE
22.00A	HAND SHOWER AND DIVERTER LOCATED ON CONTROL WALL
22.00C	CURTAIN ROD ACCESSORY
22.00D	POWDER-COATED WHITE (1 1/4" DIA.) L-SHAPED FOLD-UP SEAT
23.00A	BATHROOM FAN RE:MECHANICAL
23.00A	30" x 48" ACCESS PANEL
36.01B	WALL MOUNTED CLOSET FUTURE
1.02A	DISCREETIVE TOILET PAPER DISPENSER MOUNTED A MIN. OF 10" AFF AND 7" AFF IN FRONT OF TOILET TO CENTERLINE OF DISPENSER
1.02A	FRAMED MIRROR (48" AFF MAX.) TO BOTTOM OF REFLECTIVE SURFACE

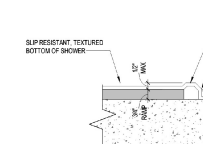
LANTZ-BOGGIO
 Architects & Interior Designers
 1880 DTC Way, Suite 200 | Englewood, CO 80111 | Ph: 303.773.2430



E1 BATHROOM ELEVATION
14'4" x 11'0"



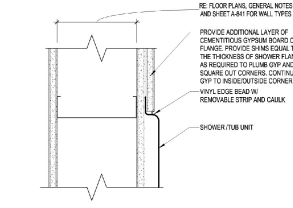
E2 BATHROOM ELEVATION
14'4" x 11'0"



E3 BATHROOM ELEVATION
14'4" x 11'0"

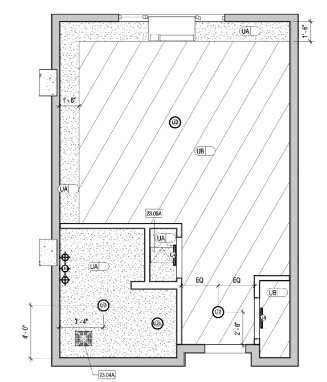


E4 TYP. SHOWER THRESHOLD
3' x 14"

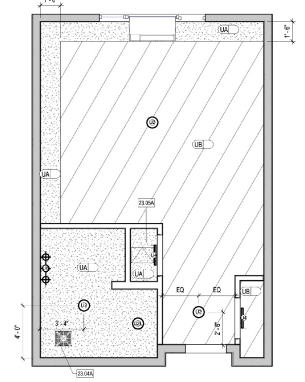


E5 TUB/SHOWER WALL DETAIL
3' x 14"

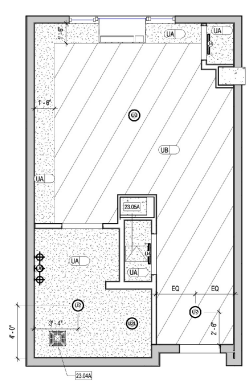
• MC-A1.0 Unit Type = EAX3	• 0.0	• 0.0
• U20	• 1.0	• 1.0
• U06	• 2.0	• 2.0
• U01	• 1.0	• 1.0
• U06	• 2.0	• 2.0
• MC-A1.2 Unit Type	• 0.0	• 0.0
• U01	• 1.0	• 1.0
• U20	• 1.0	• 1.0
• MC-A2.0 Unit Type	• 0.0	• 0.0
• U04	• 1.0	• 1.0
• U11	• 1.0	• 1.0
• U01	• 1.0	• 1.0
• U11	• 1.0	• 1.0
• MC-A2.1 Unit Type	• 0.0	• 0.0
• U6	• 1.0	• 1.0
• U20	• 1.0	• 1.0
• U01	• 1.0	• 1.0



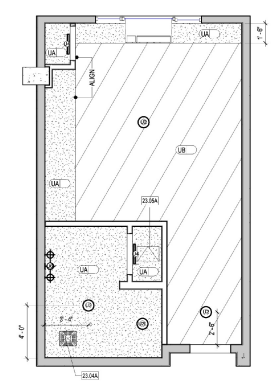
C1 UNIT MC-A1.0 RCP
14'4" x 11'0"



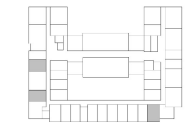
C2 UNIT MC-A1.2 RCP
14'4" x 11'0"



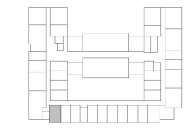
C3 UNIT MC-A2.0 RCP
14'4" x 11'0"



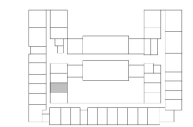
C4 UNIT MC-A2.1 RCP
14'4" x 11'0"



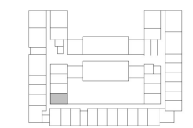
UNIT MC-A1.0
LEVEL 02



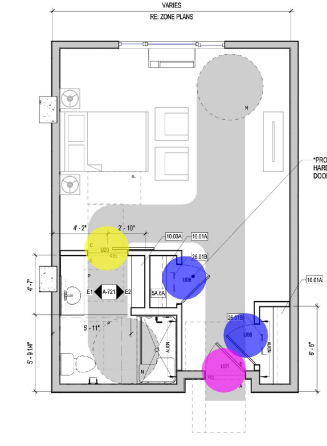
UNIT MC-A1.2
LEVEL 02



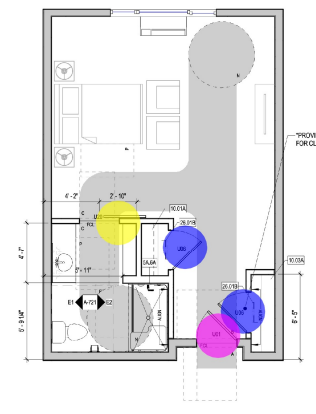
UNIT MC-A2.0
LEVEL 02



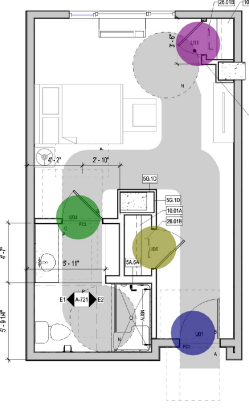
UNIT MC-A2.1
LEVEL 02



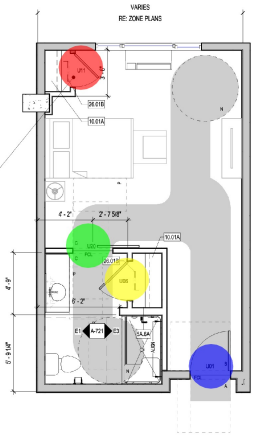
A1 UNIT PLAN MC-A1.0
14'4" x 11'0" 4/2 GSF - 3 UNITS TOTAL



A2 UNIT PLAN MC-A1.2
14'4" x 11'0" 4/9 GSF - 1 UNIT TOTAL



A3 UNIT PLAN MC-A2.0
14'4" x 11'0" 4/9 GSF - 1 UNITS TOTAL



A4 UNIT PLAN MC-A2.1
14'4" x 11'0" MC-A2.1-4/6 GSF - 1 UNITS TOTAL

Revisions:

Item	No.	Date	Description

Project Status:

Issue /	Date
PERMIT SET	07/09/2021
50% CONSTRUCTION DOCUMENTS	05/26/2021
DESIGN DEVELOPMENT PRICING SET	04/16/2021

Scale:

Project Info:

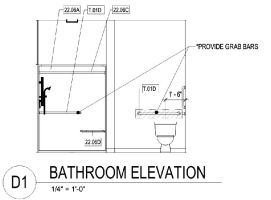
LBA Project #	2021.06
Date:	07/09/2021
Drawn by:	Author
Checked by:	Checker

Sheet Name:
ENLARGED PLANS - INTERIOR ELEVATIONS - MC

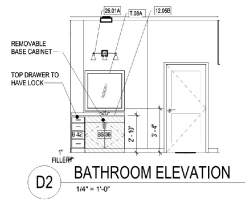
Sheet Number:

NOTE: These documents are instruments of professional service, and information contained herein is acceptable unless used in conjunction with Lantz-Boggio's representations, electronic, conventional and otherwise. Use or reproduction of these documents in whole or in part without Lantz-Boggio's consent is a violation of common law, copyright, statutory and other reserved rights. Refer to A-11 (U.S.C. sec. 301) (1991), which prescribes state and federal penalties for such violations. Lantz-Boggio, Architects & Interior Designers, 11111 Wilshire Blvd., Suite 200, Beverly Hills, CA 90210. Tel: 310.277.1111. Fax: 310.277.1112. www.lantz-boggio.com

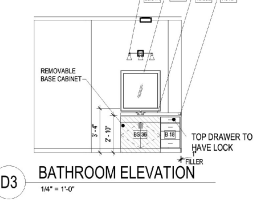
KEYNOTE LEGEND	
KEYNOTE NUMBER	KEYNOTE TEXT
10.01A	MELAMINE SHELF WITH ROD - TYPE A1(2)
10.02B	QUARTZ COUNTERTOP RE INTERIOR FINISH SCHEDULE
22.00A	HAND SHOWER AND DIVERTER LOCATED ON CONTROL WALL
22.00C	TOILET PAPER ACCESSORY
22.00D	PROVIDE CARTON WASTE (1 1/2" DIA.) L-SHAPED FOLD-UP SEAT
23.00A	BATHROOM FAN RE MECHANICAL
23.00B	30" W/4" ACCESS PANEL
26.01A	WALL MOUNTED LIGHT FIXTURE, CENTER ABOVE DOOR, RE ELECTRICAL
26.01B	WALL MOUNTED CLOSET FIXTURE
11.01D	GRAB BAR 42"
11.01A	FRAMED MIRROR 42" AFF MAX TO BOTTOM OF REFLECTIVE SURFACE



D1 BATHROOM ELEVATION
14' x 1'-0"



D2 BATHROOM ELEVATION
14' x 1'-0"



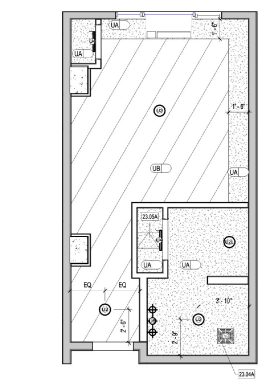
D3 BATHROOM ELEVATION
14' x 1'-0"

- U20
- MC-A5.3 Unit Type
- U06
- U01
- U11
- MC-A5.2 Unit Type=EAX5
- U20
- U06b
- U06
- U01
- U11
- MC-A5.1 Unit Type=EAX2
- U20
- U06
- U01
- MC-A5.0 Unit Type=EAX6
- U20
- U11
- U06
- U01

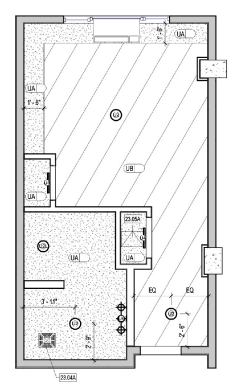
1.0 ●
 0.0 ●
 1.0 ●
 1.0 ●
 1.0 ●
 0.0 ●
 1.0 ●
 1.0 ●
 1.0 ●
 1.0 ●
 0.0 ●
 1.0 ●
 1.0 ●
 1.0 ●
 0.0 ●
 1.0 ●
 1.0 ●
 1.0 ●
 1.0 ●

**ANTHOLOGY OF
WOODLAND HILLS**

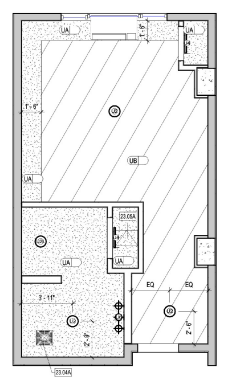
6033 DE SOTO AVENUE
LOS ANGELES, CA 91367



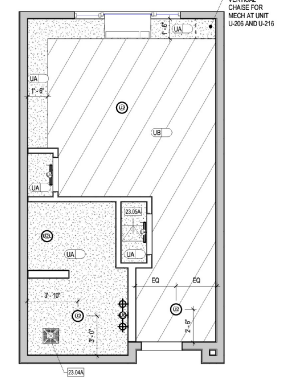
B1 UNIT MC-A5.3 RCP
14' x 1'-0"



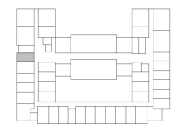
B2 UNIT MC-A5.2 RCP
14' x 1'-0"



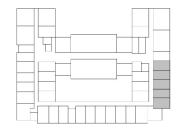
B3 UNIT MC-A5.1 RCP
14' x 1'-0"



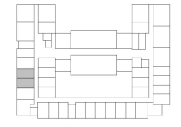
B4 UNIT MC-A5.0 RCP
14' x 1'-0"



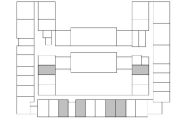
**UNIT MC-A5.3
LEVEL 02**



**UNIT MC-A5.2
LEVEL 02**



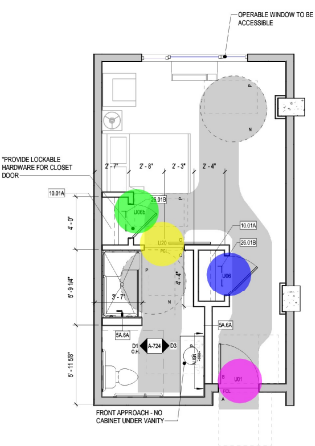
**UNIT MC-A5.1
LEVEL 02**



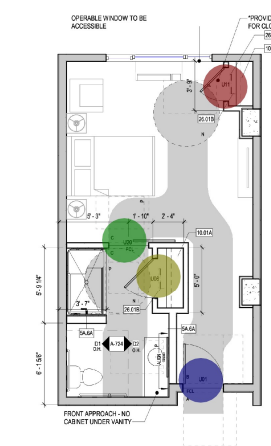
**UNIT MC-A5.0
LEVEL 02**



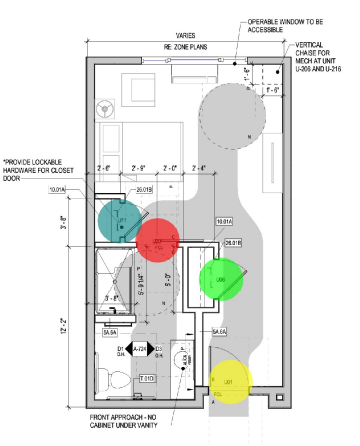
A1 UNIT PLAN MC-A5.3 ACCESSIBLE UNIT
14' x 1'-0" MC-A5.3 307 GSF - 1 UNIT TOTAL



A2 UNIT PLAN MC-A5.2 ACCESSIBLE UNIT
14' x 1'-0" 379 GSF - 5 UNITS TOTAL



A3 UNIT PLAN MC-A5.1 ACCESSIBLE UNIT
14' x 1'-0" MC-A5.1 381 GSF - 2 UNITS TOTAL



A4 UNIT PLAN MC-A5.0 ACCESSIBLE UNIT
14' x 1'-0" 381 GSF - 6 UNITS TOTAL

Item	No.	Date	Description

Project Status:

Issue /	Date
PERMIT SET	07/09/2021
50% CONSTRUCTION DOCUMENTS	05/09/2021
DESIGN DEVELOPMENT PRICING SET	04/16/2021

Author:

Checked by:

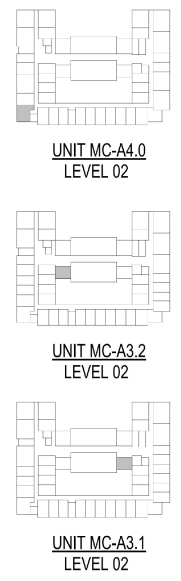
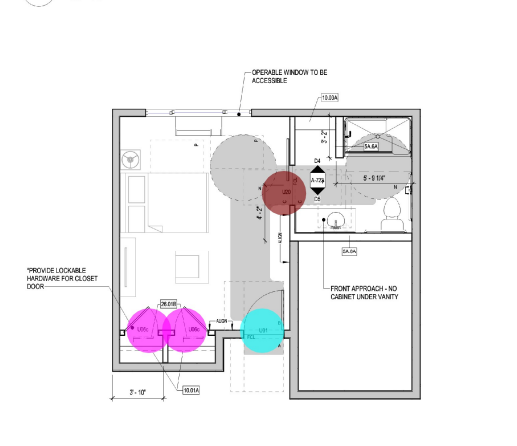
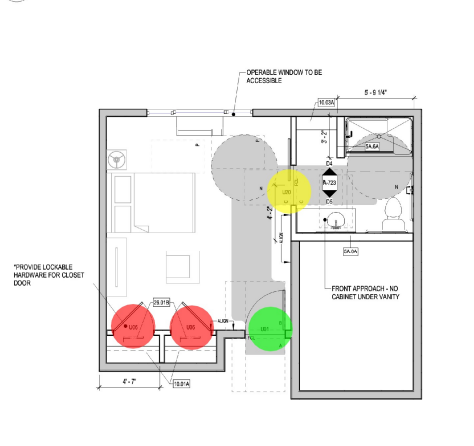
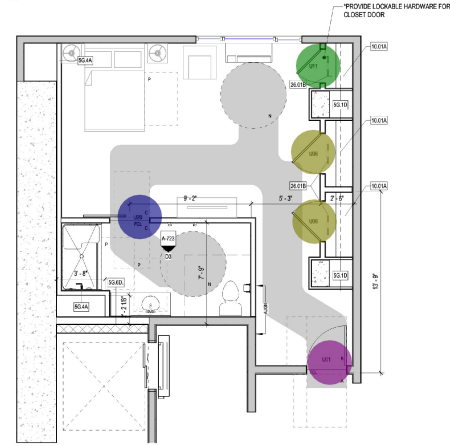
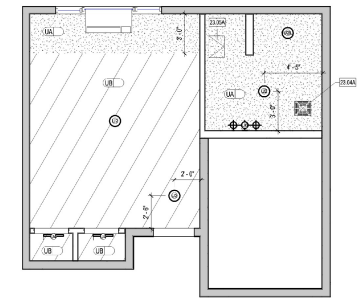
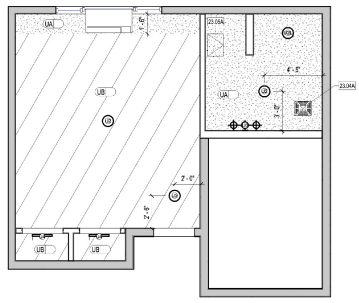
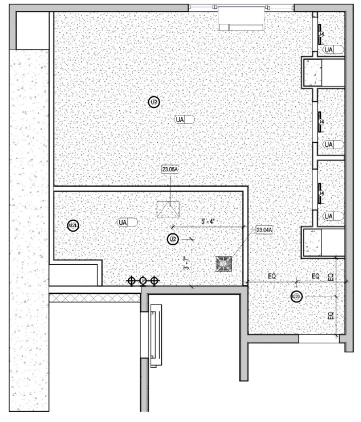
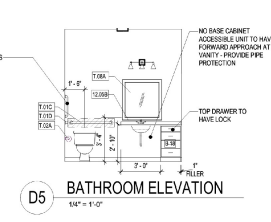
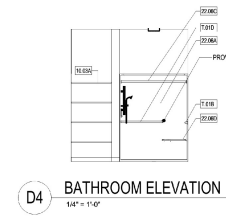
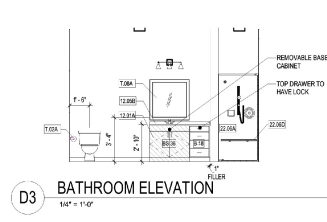
Project Info:

LBA Project #	2021.06
Drawn by	07/09/2021
Checked by	Author
Checked by	Checker

Sheet Name:
**ENLARGED PLANS -
INTERIOR ELEVATIONS -
MC**

- MC-A4.0 Unit Type 0.0
- U11 1.0
- U06 2.0
- U20 1.0
- U01 1.0
- U06 2.0
- MC-A3.2 Unit Type 0.0
- U20 1.0
- U01 1.0
- U06c 2.0
- MC-A3.1 Unit Type 0.0
- U20 1.0
- U01 1.0

KEYNOTE LEGEND	
KEYNOTE NUMBER	KEYNOTE TEXT
10.01A	MELAMINE SHELF WITH ROD - TYPE A (1/2")
10.02A	FIXED MELAMINE SHELVING (6" DEEP) SHELVES PAINTED. RE: SHEET A-681
12.01A	WOOD CABINETRY. RE: INTERIOR FINISH SCHEDULE
12.02B	QUARTZ COUNTERTOP. RE: INTERIOR FINISH SCHEDULE
22.01A	HAND SHOWER AND DIVERTER LOCATED ON CONTROL WALL
22.02C	CURTAIN ROD ACCESSORY
22.03D	POWDER-COATED WHITE (1/2" DIA) L-SHAPED HOLD-UP SEAT
22.04A	BATHROOM FAHRE MECHANICAL
22.05A	30" x 48" ACCESS PANEL
26.01B	WALL MOUNTED CLOSET FACTURE
T.01B	GRAB BAR 36"
T.01C	GRAB BAR 36"
T.01D	GRAB BAR 42"
T.01E	DECORATIVE TOILET PAPER DISPENSER MOUNTED A MIN. OF 16" AFF AND 7" AFF WITHOUT OF TOILET TO CENTERLINE OF DISPENSER
T.01A	FRAMED MIRROR 42" AFF MAX TO BOTTOM OF REFLECTIVE SURFACE



ANTHOLOGY OF WOODLAND HILLS

6033 DE SOTO AVENUE
LOS ANGELES, CA 91367

Revisions:

Item	No.	Date	Description

Project Status:

Issue /	date
PERMIT SET	07/09/2021
50% CONSTRUCTION DOCUMENTS	05/26/2021
DESIGN DEVELOPMENT PRICING SET	04/16/2021

Scale:

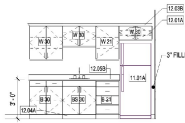
Project info:

LBA Project # 2021.06
Date: 07/09/2021
Drawn by: Author
Checked by: Checker

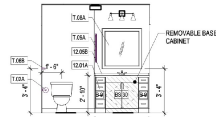
Sheet Name:
ENLARGED PLANS - INTERIOR ELEVATIONS - MC

Sheet Number:

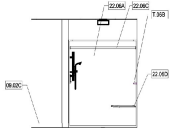
NOTICE: These documents are instruments of professional service, and information contained therein is to be used only for the project and site specifically identified. No reproduction or use of these documents in whole or in part without Lantz-Boggio's consent is in violation of common law, copyright, statutory and other reserved rights. Refer to A-11 (U.S.C. sec. 301) (1999), which prescribes state and local public records act. Refer to A-11 (U.S.C. sec. 301) (1999).
 7/9/2021 4:56:52 PM
 Print Date / Time Stamp



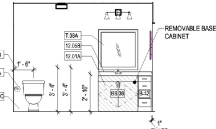
E1 WETBAR ELEVATION
1/4" = 1'-0"



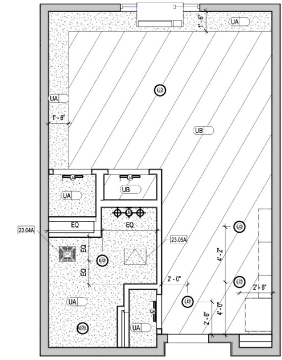
E2 BATHROOM ELEVATION
1/4" = 1'-0"



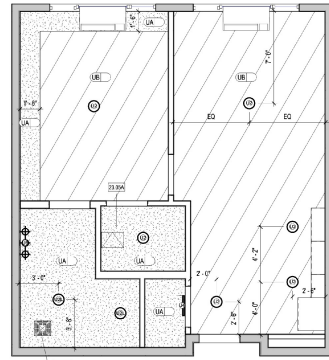
D1 BATHROOM ELEVATION
1/4" = 1'-0"



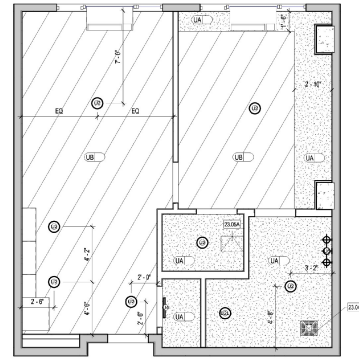
D2 BATHROOM ELEVATION
1/4" = 1'-0"



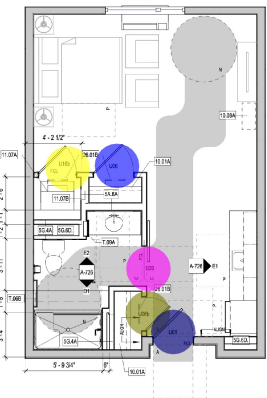
B1 UNIT AL-A1.0 RCP
1/4" = 1'-0"



B3 UNIT AL-B1.0 RCP
1/4" = 1'-0"



B4 UNIT AL-B1.1 RCP
1/4" = 1'-0"



A1 UNIT PLAN AL-A1.0
1/4" = 1'-0" 486 GSF - 6 UNITS TOTAL



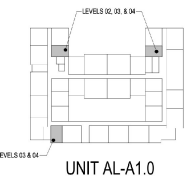
A3 UNIT PLAN AL-B1.0
1/4" = 1'-0" 624 GSF - 4 UNITS TOTAL



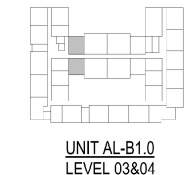
A4 UNIT PLAN AL-B1.1
1/4" = 1'-0" 624 GSF - 4 UNITS TOTAL

KEYNOTE LEGEND	
KEYNOTE NUMBER	KEYNOTE TEXT
09.00C	VINYL BASE, RE INTERIOR FINISH SCHEDULE
10.02A	NEUBAU SHEET WITH REED - TYPE A (1/2")
10.02A	SPACES ALLOCATED FOR FUTURE RESIDENT'S PERSONAL SET OF DRAWERS 12" X 15"
11.01A	REFRIGERATOR AND FREEZER COMBO - TYPE A
11.07A	STAINLESS WAREHOUSER
11.07B	WASHER CONNECTION
12.02A	WOOD CABINETS, RE INTERIOR FINISH SCHEDULE
12.02B	CROWN MO CABINET MOLDING
12.02A	TOE KICK TO MATCH CABINETS
12.09B	QUARTZ COUNTERTOP, RE INTERIOR FINISH SCHEDULE
12.04A	HAND SHOWER AND DUCHTER LOCATED ON CONTROL WALL
22.00C	CURTAIN ROD ACCESSORY
22.00A	POSITION-GATED WHITE 1/2" DIA L-SHIPPED FOLD-UP SEAT
23.02A	BATHROOM FAN RE-MECHANICAL
23.02A	20" X 4" ACCESS PANEL
35.01B	WALL MOUNTED TOILET FIXTURE
1.02A	DECORATIVE TOILET PAPER DISPENSER MOUNTED A MIN OF 10" AFF AND 7" AFF IN FRONT OF TOILET TO CENTERLINE OF DISPENSER
1.09B	TOWEL BAR 2" MOUNTED 47" MAX AFF
7.03A	FRAMED MIRROR 47" AFF MAX TO BOTTOM OF REFLECTIVE SURFACE
7.03A	MEDICINE CABINET TO BE CENTERED ON VANITY COUNTERTOP AND 40" AFF TO BOTTOM OF CABINET

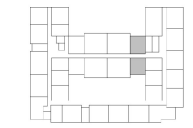
- AL-A1.0 Unit Type=EAX8 0.0
- u20 1.0
- U10b 1.0
- u06b 1.0
- U01 1.0
- u06 1.0
- AL-B1.0 Unit Type=EAX4 0.0
- U04 1.0
- U03 1.0
- U06 1.0
- U01 1.0
- U10 1.0
- AL-B1.1 Unit Type=EAX4 0.0
- U04 1.0
- U03 1.0
- U06 1.0
- U01 1.0
- U10 1.0



UNIT AL-A1.0



UNIT AL-B1.0 LEVEL 03&04



UNIT AL-B1.1 LEVEL 03&04

Revisors:

Item	No.	Date	Description

Project Status:

ISSUE /	DATE
PERMIT SET	07/09/2021
50% CONSTRUCTION DOCUMENTS	05/09/2021
DESIGN DEVELOPMENT PRICING SET	04/16/2021

Suit: _____

Project info: _____

Sheet Name:

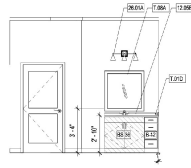
LBA Project #	2021.06
Date:	07/09/2021
Drawn by:	Author
Checked by:	Checker

ENLARGED PLANS - INTERIOR ELEVATIONS - AL

Sheet Number: _____

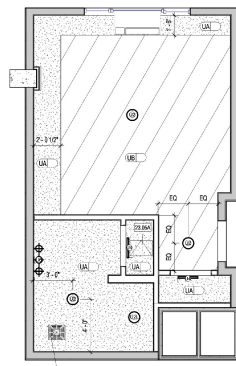
NOTE: These documents are instruments of professional service, and shall remain the property of Lantz-Boggio Architects & Interior Designers. No reproduction or use of these documents in whole or in part without Lantz-Boggio's consent is in violation of common law, copyright, statutory and other reserved rights. Refer to A411 U.S.C. sec. 301 (B)(1).
 7/9/2021 4:57:37 PM
 Stamp:

KEYNOTE LEGEND	
KEYNOTE NUMBER	KEYNOTE TEXT
10.0FA	MELAMINE SHELF WITH ROD - TYPE A1121
10.0GB	QUARTZ COUNTERTOP RE INTERIOR FINISH SCHEDULE
20.0AA	BATHROOM FAN RE MECHANICAL
20.0AA	20" W/ ACCESS PANEL
20.0AA	WALL MOUNTED LIGHT FIXTURE CENTER ABOVE DOOR RE ELECTRICAL
30.0FB	WALL MOUNTED CLOSET FIXTURE
3.000	SHAM BATH 42"
7.00A	FRAMED MIRROR 42" AFF MAX TO BOTTOM OF REFLECTIVE SURFACE

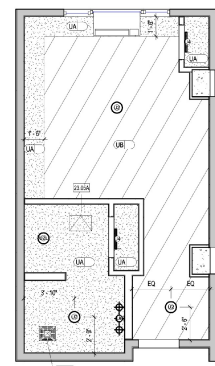


E3 BATHROOM ELEVATION
1/4" = 1'-0"

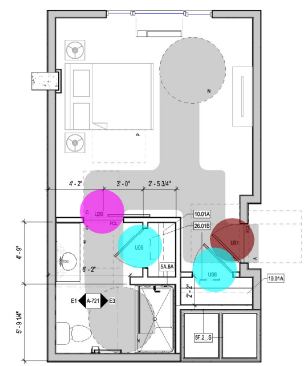
• U20	1.0	
• MC-A6.0 Unit Type	0.0	
• U06	2.0	
• U01	1.0	
• U11	1.0	
• MC-A5.4 Unit Type	0.0	
• U20	1.0	
• U06	1.0	
• U01	1.0	



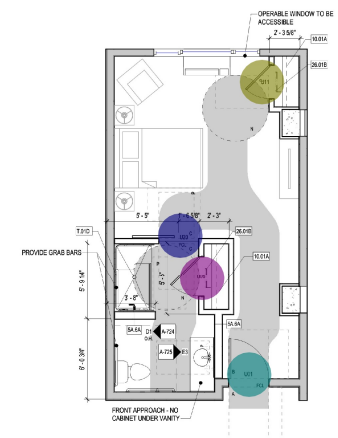
B3 UNIT MC-A6.0 RCP
1/4" = 1'-0"



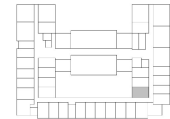
B4 UNIT MC-A5.4 RCP
1/4" = 1'-0"



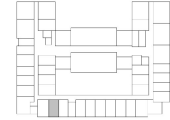
A3 UNIT PLAN MC-A6.0
1/4" = 1'-0" 40' GSF - 1 UNIT TOTAL



A4 UNIT PLAN MC-A5.4 *ACCESSIBLE UNIT
1/4" = 1'-0" 382' GSF - 1 UNIT TOTAL



UNIT MC-A6.0
LEVEL 02



UNIT MC-A5.4
LEVEL 02

Revisions:

Item	No.	Date	Description

Project Status:

Issue /	date
PERMIT SET	07/09/2021
50% CONSTRUCTION DOCUMENTS	05/26/2021
DESIGN DEVELOPMENT PRICING SET	04/16/2021

Seal:

Project info:

LBA Project #	2021_06
Drawn by:	07/09/2021
Checked by:	Author
Checked by:	Checker

ENLARGED PLANS -
INTERIOR ELEVATIONS -
MC

Sheet Number:

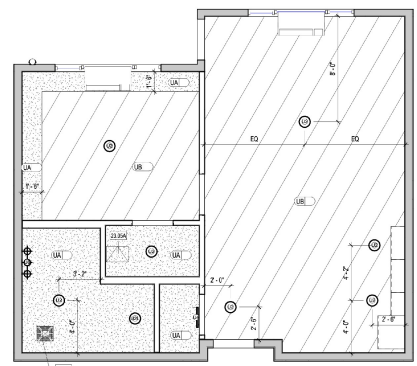
NOTE: These documents are instruments of professional service, and shall remain the property of Lantz-Boggio Architects & Interior Designers. Use or reproduction of these documents in whole or in part without Lantz-Boggio consent is a violation of common law, copyright, statutory and other reserved rights. Refer to A-11 U.S.C. sec. 111 (1988), which preserves state and local public records act. Refer to A-11 U.S.C. sec. 301 (1987).
 Plot Date / Time
 7/9/2021 4:57:21 PM
 Stamp

NOTE: These documents are instruments of professional service, and information contained herein is to provide a basis for construction. It is the responsibility of the contractor to verify all dimensions, elevations, and annotations. Use or reproduction of these documents in whole or in part without Lantz-Boggio's consent is a violation of common law, copyright, statutory and other reserved rights. Refer to A/C 11 U.S.C., sec. 911 (1994), which prescribes state and local public records act. Refer to A/C 11 U.S.C., sec. 331 (1991).
 Plot Date / Time Stamp: 7/9/2021 4:58:09 PM

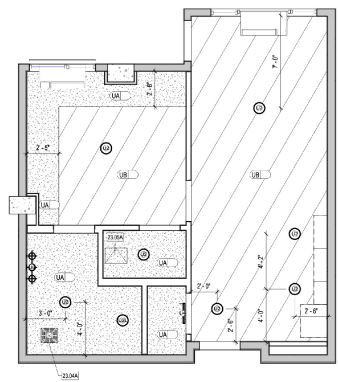
- AL-B1.5 Unit Type=EAX4
- U03
- U01
- U06
- U04
- U10
- AL-B1.6 Unit Type=EAX2
- U02
- U01
- U10
- U03
- U06
- U04
- U02
- AL-B2.0 Unit Type=EAX4
- U10
- U01
- U06
- U03
- U20

KEYNOTE LEGEND	
KEYNOTE NUMBER	KEYNOTE TEXT
10L2A	MELAMINE SHELF WITH ROD - TYPE A (12")
10L6A	SPACE ALLOCATED FOR FUTURE RESIDENT'S PERSONAL SET OF DRAWERS
11L7A	12" MAX. JUMP
11L7B	STACKING WASHERCORNER
11L7C	WASHER CONNECTION
21L6A	BATH ROOM FAN RE MECHANICAL
21L6B	20" W/ ACCESS PANEL
21L6C	VTAC SYSTEM
21L6D	ACCESS PANEL RETURN AIR GRILLE
26L1B	WALL LOCKER'S CLOSET FOOTING
T.08B	TOWEL BAR 24" MOUNTED 42" MAX. JUMP
T.08A	MEDICINE CABINET TO BE CENTERED ON VANITY COUNTERTOP AND 42" W/ 10" BOTTOM OF CABINET

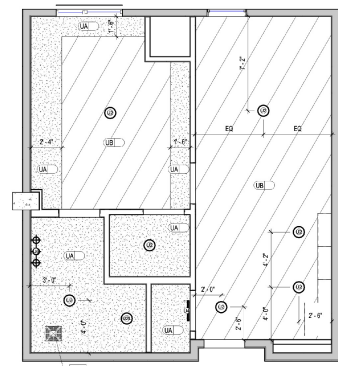
**ANTHOLOGY OF
WOODLAND HILLS**
 6033 DE SOTO AVENUE
 LOS ANGELES, CA 91367



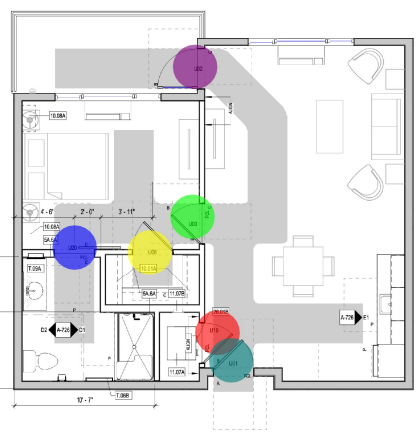
C1 UNIT AL-B2.0 RCP
 144" x 112"



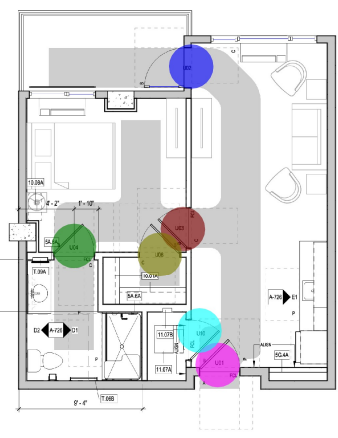
C3 UNIT AL-B1.6 RCP
 144" x 112"



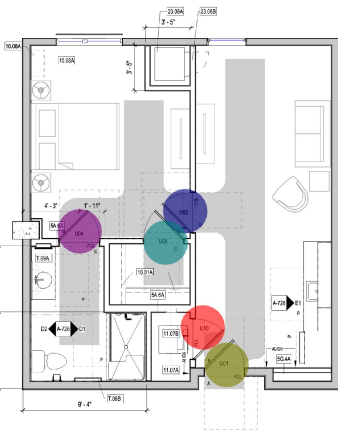
C5 UNIT AL-B1.5 RCP
 144" x 112"



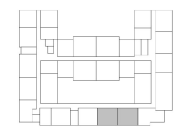
A1 UNIT PLAN AL-B2.0
 144" x 112" 733 GSF - 4 UNITS TOTAL



A3 UNIT PLAN AL-B1.6
 144" x 112" 869 GSF - 2 UNITS TOTAL



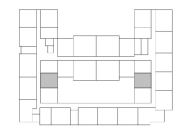
A5 UNIT PLAN AL-B1.5
 144" x 112" 982 GSF - 4 UNITS TOTAL



**UNIT AL-B2.0
LEVELS 03&04**



**UNIT AL-B1.6
LEVELS 03&04**



**UNIT AL-B1.5
LEVELS 03&04**

Revisions:

Item	No.	Date	Description

Project Status:

Issue /	date
PERMIT SET	07/09/2021
50% CONSTRUCTION DOCUMENTS	05/26/2021
DESIGN DEVELOPMENT PRICING SET	04/16/2021

Suit:

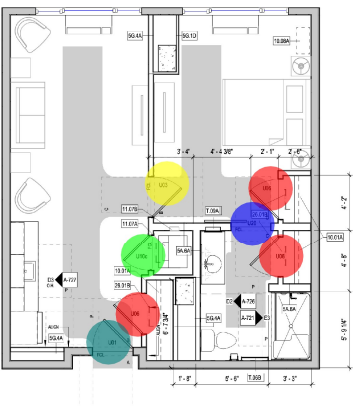
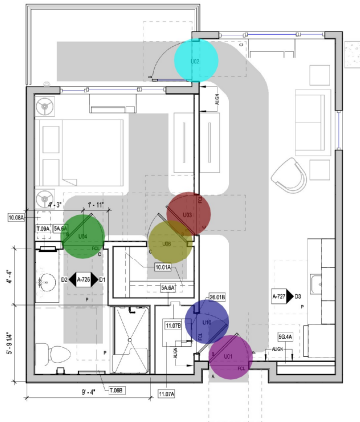
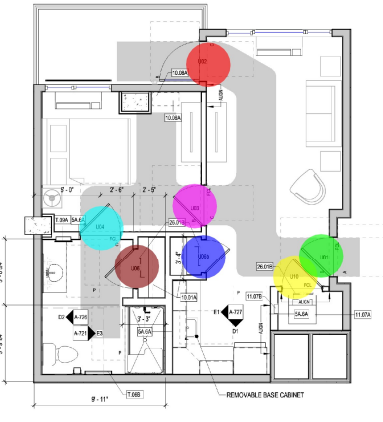
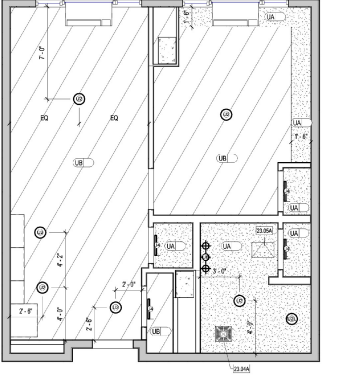
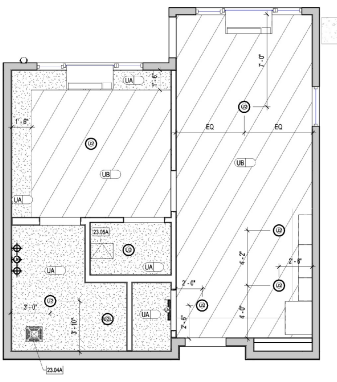
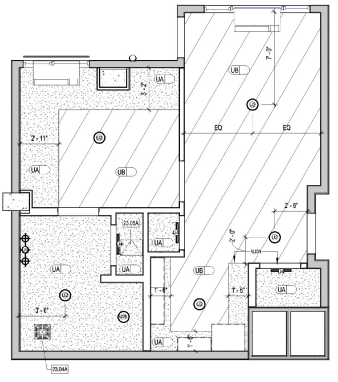
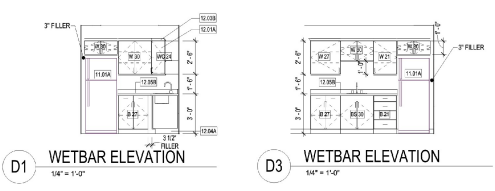
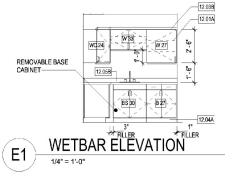
Project info:

LBA Project #	2021.06
Drawn by:	Author
Checked by:	Checker

**ENLARGED PLANS -
INTERIOR ELEVATIONS -
AL**

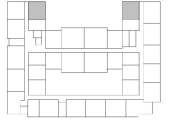
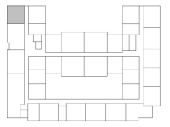
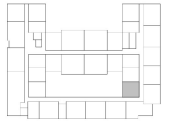
Sheet Number:

NOTE: These documents are instruments of professional service, and information contained herein is to be used for the project for which it is prepared. It is the responsibility of the user to ensure that the information is current and accurate. Lantz-Boggio Architects & Interior Designers, Inc. is not responsible for any errors or omissions in these documents. Use of these documents is limited to the project for which they are prepared. No part of these documents may be reproduced, stored in a retrieval system, or transmitted in any form or by any means, electronic, mechanical, photocopying, recording, or by any information storage and retrieval system, without the prior written permission of Lantz-Boggio Architects & Interior Designers, Inc.



KEYNOTE LEGEND	
KEYNOTE NUMBER	KEYNOTE TEXT
10.01A	MELAMINE SHELF WITH ROD - TYPE A (1/2")
10.01B	SPACE ALLOCATED FOR FUTURE RESIDENT'S PERSONAL SET OF DRAWERS
11.01A	12" DEEP PUP
11.01B	REPRESENTATION AND FREEZER COMBO - TYPE A
11.01C	STANDING WASHERS/DISHERS
11.01D	WASHER CONNECTION
12.01A	WOOD CABINETRY: SEE INTERIOR FINISH SCHEDULE
12.01B	CROWN BY CABINET MANUF.
12.01C	TOE KICK TO MATCH CABINETRY
12.01D	QUARTZ COUNTERTOP: SEE INTERIOR FINISH SCHEDULE
12.01E	BATHROOM FAN RE MECHANICAL
12.01F	20" W/ ACCESS PANEL
12.01G	WALL MOUNTED CLOSET FIXTURE
12.01H	TOWEL BAR 24" MOUNTED AT MAX AFF
12.01I	MEDICINE CABINET TO BE CENTERED ON VANITY COUNTERTOP AND 40" AFF TO BOTTOM OF CABINET

- AL-B1.2 Unit Type=EAX6 0.0
- U06 3.0
- U01 1.0
- U10c 1.0
- u03 1.0
- u20 1.0
- AL-B1.3 Unit Type=EAX3 0.0
- u03 1.0
- u02 1.0
- u04 1.0
- u10 1.0
- u01 1.0
- AL-B1.4 Unit Type=EAX2 0.0
- u02 1.0
- U10 1.0
- U06b 1.0
- u03 1.0
- U04 1.0
- U06 1.0
- U01 1.0



ANTHOLOGY OF WOODLAND HILLS
 6033 DE SOTO AVENUE
 LOS ANGELES, CA 91367

Revisions:

Item	No.	Date	Description

Project Status:

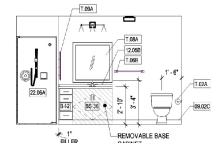
ISSUE /	DATE
PERMIT SET	07/09/2021
50% CONSTRUCTION DOCUMENTS	05/06/2021
DESIGN DEVELOPMENT PRICING SET	04/16/2021

Project Info:

LBA Project #	2021.06
Date:	07/09/2021
Drawn by:	Author
Checked by:	Checker

ENLARGED PLANS - INTERIOR ELEVATIONS - AL

NOTE: These documents are instruments of professional service, and information contained herein is to be used for the project only. It is not to be reproduced, stored in a retrieval system, or transmitted in any form or by any means, electronic, mechanical, photocopying, recording, or by any information storage and retrieval system, without the prior written consent of Lantz-Boggio Architects & Interior Designers. Use of information from these documents in violation of this consent is a violation of common law, copyright, statutory and other reserved rights. Refer to A-111 U.S.C. sec. 311 (1999), which prohibits state and local public records act. Refer to A-111 U.S.C. sec. 311 (1999).

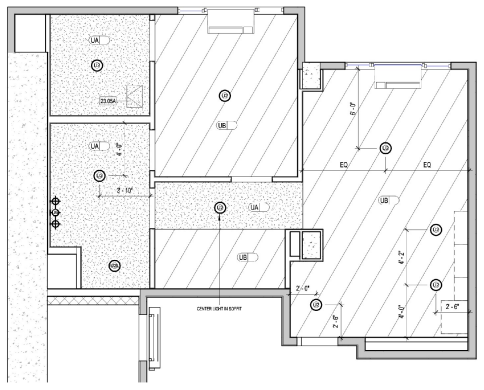


D1 BATHROOM ELEVATION
1/4" = 1'-0"

KEYNOTE LEGEND

KEYNOTE NUMBER	KEYNOTE TEXT
08.00C	VINYL BASE, RE INTERIOR FINISH LEGEND
10.00A	MELAMINE SHELF WITH ROD - TYPE A (17)
10.00A	ROCK MELAMINE SHELF (W/AL) 1/2" DEEP SHELVES, PAINTED, RE. SHEET A-684
10.00A	SPACE ALLOCATED FOR FUTURE RESIDENT'S PERSONAL SET OF DRAWERS 15"X24"
11.00A	STACKING WASHMACHINE DRYER
11.00B	WASHER CONNECTION
12.00B	QUARTZ COUNTERTOP, RE INTERIOR FINISH SCHEDULE
22.00A	HAND SHOWER AND DIVERter LOCATED ON CONTROL WALL
23.00A	BATHROOM FAIRIE MECHANICAL
23.00A	20"x4" ACCESS PANEL
30.00B	WALL MOUNTED CLOSET FEATURE
30.00B	EDUCATIVE TOILET PAPER DISPENSER MOUNTED A MIN. OF 15" AFF AND 7'-0" INFRONT OF TOILET TO CENTERLINE OF DISPENSER
7.00A	TONE, BASE OF MOUNTED 48" X36" AFF
7.00B	TONE, MIRROR 48" AFF MAX TO BOTTOM OF REFLECTIVE SURFACE
7.00A	MEDICINE CABINET TO BE CENTERED ON VANITY COUNTERTOP AND 48" AFF TO BOTTOM OF CABINET

- U02
- AL-B2.5 Unit Type=EAX2
- U10
- U01
- U06
- U03
- U20
- AL-B2.6 Unit Type=EAX2
- U02
- U01
- U10
- U03
- U20
- U06
- U06
- AL-B3.0 Unit Type=EAX2
- U04
- U01
- U03



B1 UNIT AL-B3.0 RCP
1/4" = 1'-0"



B3 UNIT AL-B2.6 RCP
1/4" = 1'-0"



B5 UNIT AL-B2.5
1/4" = 1'-0"



A1 UNIT PLAN AL-B3.0
1/4" = 1'-0" 122 OSF - 2 UNITS TOTAL



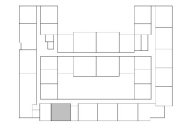
A3 UNIT PLAN AL-B2.6
1/4" = 1'-0" 122 OSF - 2 UNITS TOTAL



A5 UNIT PLAN AL-B2.5
1/4" = 1'-0" 122 OSF - 2 UNITS TOTAL



UNIT AL-B3.0 LEVEL 03&04



UNIT AL-B2.6 LEVEL 03&04



UNIT AL-B2.5 LEVEL 03&04

KEYNOTE LEGEND

KEYNOTE NUMBER	KEYNOTE TEXT
08.00C	VINYL BASE, RE INTERIOR FINISH LEGEND
10.00A	MELAMINE SHELF WITH ROD - TYPE A (17)
10.00A	ROCK MELAMINE SHELF (W/AL) 1/2" DEEP SHELVES, PAINTED, RE. SHEET A-684
10.00A	SPACE ALLOCATED FOR FUTURE RESIDENT'S PERSONAL SET OF DRAWERS 15"X24"
11.00A	STACKING WASHMACHINE DRYER
11.00B	WASHER CONNECTION
12.00B	QUARTZ COUNTERTOP, RE INTERIOR FINISH SCHEDULE
22.00A	HAND SHOWER AND DIVERter LOCATED ON CONTROL WALL
23.00A	BATHROOM FAIRIE MECHANICAL
23.00A	20"x4" ACCESS PANEL
30.00B	WALL MOUNTED CLOSET FEATURE
30.00B	EDUCATIVE TOILET PAPER DISPENSER MOUNTED A MIN. OF 15" AFF AND 7'-0" INFRONT OF TOILET TO CENTERLINE OF DISPENSER
7.00A	TONE, BASE OF MOUNTED 48" X36" AFF
7.00B	TONE, MIRROR 48" AFF MAX TO BOTTOM OF REFLECTIVE SURFACE
7.00A	MEDICINE CABINET TO BE CENTERED ON VANITY COUNTERTOP AND 48" AFF TO BOTTOM OF CABINET

ANTHOLOGY OF WOODLAND HILLS

6033 DE SOTO AVENUE
LOS ANGELES, CA 91367

Revisions:

Item	No.	Date	Description

Project Status:

Issue /	date
PERMIT SET	07/09/2021
50% CONSTRUCTION DOCUMENTS	05/02/2021
DESIGN DEVELOPMENT PRICING SET	04/16/2021

Sheet Info:

LBA Project #	2021.06
Date:	07/09/2021
Drawn by:	Author
Checked by:	Checker

Project Info:

ENLARGED PLANS - INTERIOR ELEVATIONS - AL

Sheet Number:

A-730

NOTE: These documents are instruments of professional service, and information contained herein is to be used for the project for which they were prepared. No part of these documents shall be reproduced or transmitted in any form or by any means, electronic, mechanical, photocopying, recording, or by any information storage and retrieval system, without the prior written permission of Lantz-Boggio Architects & Interior Designers. Use or reproduction of these documents in whole or in part without Lantz-Boggio's consent is a violation of common law, copyright, statutory and other reserved rights. Refer to A-11 (I.L.C. sec. 9111), and other applicable laws and regulations. Refer to A-11 (I.L.C. sec. 9111) and other applicable laws and regulations. Refer to A-11 (I.L.C. sec. 9111).
 7/9/2021 4:58:24 PM
 Print Date / Time Stamp



C1 UNIT AL-B2.3 RCP
1/4" = 1'-0"



C3 UNIT AL-B2.2 RCP
1/4" = 1'-0"



C4 UNIT AL-B2.1 RCP
1/4" = 1'-0"

KEYNOTE LEGEND	
KEYNOTE NUMBER	KEYNOTE TEXT
10.0A	MELAMINE SHELF WITH ROD - TYPE A (1/2")
10.0A	FIXED MELAMINE SHELVING (6" DEEP SHELVES, PAINTED, RE: SHEET A-68)
10.0A	SPACE ALLOCATED FOR CLIENT'S PERSONAL SET OF DRAWERS (12"x24"x16")
11.0A	STACKING WASHER/DRYER
11.0B	WASHER CONNECTION
20.0A	BATHROOM FAN RE MECHANICAL
20.0A	20" x 4" ACCESS PANEL
26.0A	WALL MOUNTED CLOSET FUTURE
T.000	TONE, USE 3/4" MOUNTED 1/4" WALL P
T.00A	MEDICINE CABINET TO BE CENTERED ON VANITY COUNTERTOP END AND 40" AFF TO BOTTOM OF CABINET

- AL-B2.1 Unit Type=EAX3 0.0
- U02 1.0
- U01 1.0
- U06 2.0
- U03 1.0
- U04 1.0
- AL-B2.2 Unit Type=EAX6 0.0
- U03 1.0
- U02 1.0
- U06 2.0
- U04 1.0
- U01 1.0
- AL-B2.3 Unit Type=EAX3 0.0
- U03 1.0
- U02 1.0
- U20 1.0
- U06 1.0
- U10a 1.0
- U01 1.0



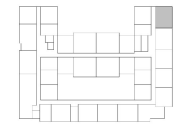
A1 UNIT PLAN AL-B2.3
1/4" = 1'-0" 711 GSF - 3 UNITS TOTAL



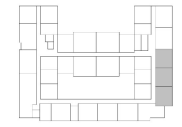
A3 UNIT PLAN AL-B2.2
1/4" = 1'-0" 701 GSF - 6 UNITS TOTAL



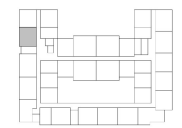
A4 UNIT PLAN AL-B2.1
1/4" = 1'-0" 700 GSF - 3 UNITS TOTAL



UNIT AL-B2.3
LEVELS 02,03&04



UNIT AL-B2.2
LEVELS 03&04



UNIT AL-B2.1
LEVELS 02,03&04

LANTZ-BOGGIO
 Architects & Interior Designers
 5885 DTC Plaza, Suite 201 | Englewood | CO 80111 | Ph. 303.773.0430

ANTHOLOGY OF WOODLAND HILLS

6033 DE SOTO AVENUE
 LOS ANGELES, CA 91367

Revisors:

Item	No.	Date	Description

Project Status:

Issue /	date
PERMIT SET	07/09/2021
50% CONSTRUCTION DOCUMENTS	05/09/2021
DESIGN DEVELOPMENT PRICING SET	04/16/2021

Seal:

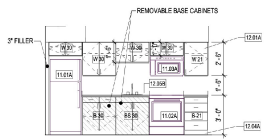
Project info:

LBA Project #	2021.06
Date:	07/09/2021
Drawn by:	Author
Checked by:	Checker

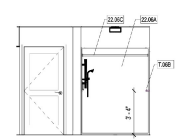
Sheet Name:

**ENLARGED PLANS -
 INTERIOR ELEVATIONS -
 AL**

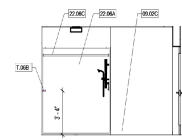
Sheet Number:



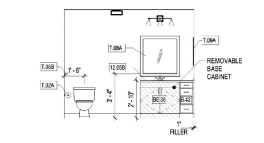
E1 KITCHEN ELEVATION
14'4" x 11'0"



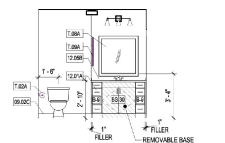
E2 BATHROOM ELEVATION
14'4" x 11'0"



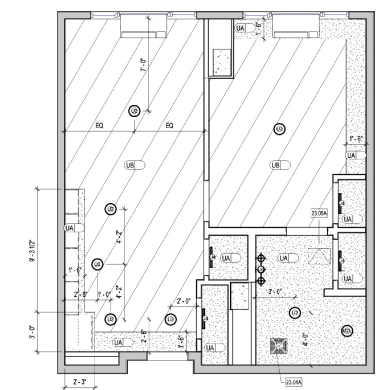
E3 BATHROOM ELEVATION
14'4" x 11'0"



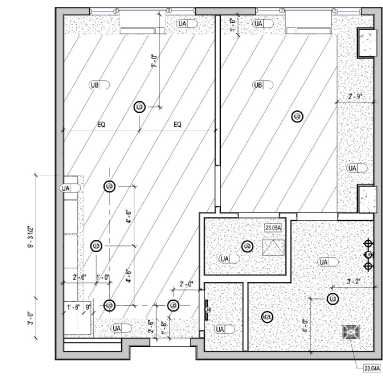
D1 BATHROOM ELEVATION
14'4" x 11'0"



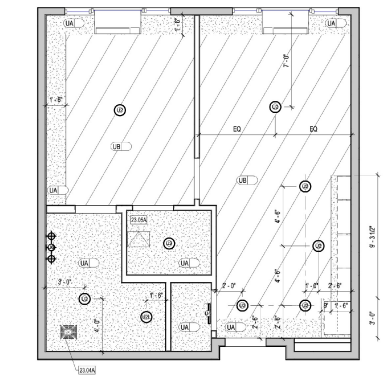
D2 BATHROOM ELEVATION
14'4" x 11'0"



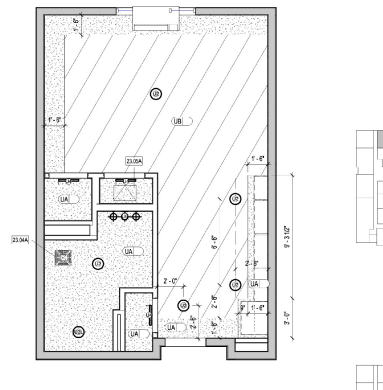
C1 UNIT IL-B1.2 RCP
14'4" x 11'0"



C3 UNIT IL-B1.1 RCP
14'4" x 11'0"



C4 UNIT IL-B1.0 RCP
14'4" x 11'0"



C5 UNIT IL-A1.0 RCP
14'4" x 11'0"



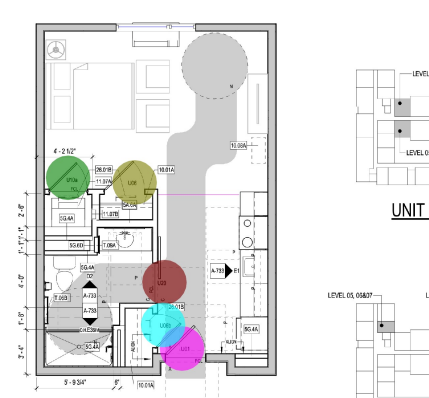
A1 UNIT PLAN IL-B1.2
14'4" x 11'0" 634 GSF - 5 UNITS TOTAL



A3 UNIT PLAN IL-B1.1
14'4" x 11'0" 624 GSF - 5 UNITS TOTAL



A4 UNIT PLAN IL-B1.0
14'4" x 11'0" 624 GSF - 5 UNITS TOTAL



A5 UNIT PLAN IL-A1.0
14'4" x 11'0" 466 GSF - 4 UNITS TOTAL

- U01
- IL-A1.0 Unit Type=EAX8
- u20
- U06b
- u10a
- u06
- U01
- IL-B1.0 Unit Type=EAX5
- U10
- U03
- U06
- U04
- U01
- IL-B1.1 Unit Type=EAX5
- U10
- U03
- U06
- U04
- U01
- IL-B1.2 Unit Type=EAX5
- U10c
- U06
- u04
- u03
- u06

KEYNOTE LEGEND	
KEYNOTE NUMBER	KEYNOTE TEXT
08.02C	VINYL BASE, RE INTERIOR FINISH-LEGEND
10.02A	MELAMINE SHELF WITH HCD - TYPE A (1/2")
10.02A	SPACE ALLOCATION FOR FILLER REFINISH'S PERSONAL SET OF DRAWERS 12"X24"
11.01A	REFRIGERATOR AND FREEZER COMBO - TYPE A
11.02A	RANGE WITH FRONT CONTROLS - TYPE A
11.02A	MICROWAVE/hood - TYPE A
11.02A	STAINLESS WAREWARES
11.02B	WASHER CONNECTION
12.02A	WOOD CABINETS, RE INTERIOR FINISH SCHEDULE
12.02A	TOE KICK TO MATCH CABINETS
12.02C	QUANTITY COUNT SHELF, RE INTERIOR FINISH SCHEDULE
22.02A	HAND SHOWER AND DRYER, LOCATED ON CONTROL WALL
22.02C	CURTAIN ROD ACCESSORY
22.02A	BATHROOM FAHRE MECHANICAL
22.02A	20"X4" ACCESS PANEL
26.02B	WALL MOUNTED CLOSET FURNITURE
11.02A	EXHAUSTIVE TOILET PAPER DISPENSER MOUNTED A MIN. OF 10" AFF AND 7" AFF IN FRONT OF TOILET TO CENTERLINE OF DISPENSER
11.02B	TONGUE, BASE OF MOUNTED 10"X4" AFF
11.02B	FRAMED MIRROR 42" AFF MAX TO BOTTOM OF REFLECTIVE SURFACE
11.02A	MEDICINE CABINET TO BE CENTERED ON VANITY COUNTERTOP AND 40" AFF TO BOTTOM OF CABINET

Item	No.	Date	Description

Project Status:	
Issue /	date
PERMIT SET	07/09/2021
50% CONSTRUCTION DOCUMENTS	05/09/2021
DESIGN DEVELOPMENT PRICING SET	04/16/2021

Scale:

Project info:

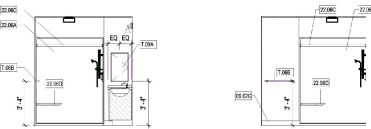
LBA Project #	2021.06
Date:	07/09/2021
Drawn by:	Author
Checked by:	Checker

Sheet Name:
ENLARGED PLANS - INTERIOR ELEVATIONS - IL

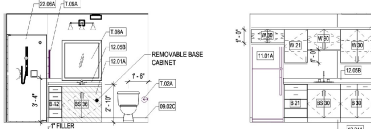
Sheet Number:
A-733

NOTE: These documents are instruments of professional service, and information contained herein is to be used in conjunction with Lantz-Boggio's representations, electronic, mechanical, electrical, plumbing, and other related documents. Refer to A1111.1 (S.C. per 301.196).
 7/9/2021 4:59:33 PM
 Plot Date / Time Stamp

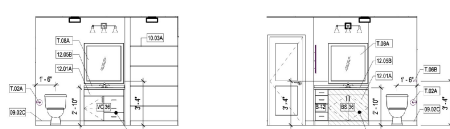
NOTE: These documents are instruments of professional service, and information contained herein is to be used in conjunction with Lantz-Boggio's representations, disclosures, covenants and other terms and conditions set forth in the Lantz-Boggio contract. No reproduction or distribution of these documents in whole or in part without Lantz-Boggio's consent is in violation of common law, copyright, statutory and other reserved rights. See also Lantz-Boggio contract, Lantz-Boggio contract addendum, Lantz-Boggio contract addendum 2, Lantz-Boggio contract addendum 3, Lantz-Boggio contract addendum 4, Lantz-Boggio contract addendum 5, Lantz-Boggio contract addendum 6, Lantz-Boggio contract addendum 7, Lantz-Boggio contract addendum 8, Lantz-Boggio contract addendum 9, Lantz-Boggio contract addendum 10, Lantz-Boggio contract addendum 11, Lantz-Boggio contract addendum 12, Lantz-Boggio contract addendum 13, Lantz-Boggio contract addendum 14, Lantz-Boggio contract addendum 15, Lantz-Boggio contract addendum 16, Lantz-Boggio contract addendum 17, Lantz-Boggio contract addendum 18, Lantz-Boggio contract addendum 19, Lantz-Boggio contract addendum 20, Lantz-Boggio contract addendum 21, Lantz-Boggio contract addendum 22, Lantz-Boggio contract addendum 23, Lantz-Boggio contract addendum 24, Lantz-Boggio contract addendum 25, Lantz-Boggio contract addendum 26, Lantz-Boggio contract addendum 27, Lantz-Boggio contract addendum 28, Lantz-Boggio contract addendum 29, Lantz-Boggio contract addendum 30, Lantz-Boggio contract addendum 31, Lantz-Boggio contract addendum 32, Lantz-Boggio contract addendum 33, Lantz-Boggio contract addendum 34, Lantz-Boggio contract addendum 35, Lantz-Boggio contract addendum 36, Lantz-Boggio contract addendum 37, Lantz-Boggio contract addendum 38, Lantz-Boggio contract addendum 39, Lantz-Boggio contract addendum 40, Lantz-Boggio contract addendum 41, Lantz-Boggio contract addendum 42, Lantz-Boggio contract addendum 43, Lantz-Boggio contract addendum 44, Lantz-Boggio contract addendum 45, Lantz-Boggio contract addendum 46, Lantz-Boggio contract addendum 47, Lantz-Boggio contract addendum 48, Lantz-Boggio contract addendum 49, Lantz-Boggio contract addendum 50, Lantz-Boggio contract addendum 51, Lantz-Boggio contract addendum 52, Lantz-Boggio contract addendum 53, Lantz-Boggio contract addendum 54, Lantz-Boggio contract addendum 55, Lantz-Boggio contract addendum 56, Lantz-Boggio contract addendum 57, Lantz-Boggio contract addendum 58, Lantz-Boggio contract addendum 59, Lantz-Boggio contract addendum 60, Lantz-Boggio contract addendum 61, Lantz-Boggio contract addendum 62, Lantz-Boggio contract addendum 63, Lantz-Boggio contract addendum 64, Lantz-Boggio contract addendum 65, Lantz-Boggio contract addendum 66, Lantz-Boggio contract addendum 67, Lantz-Boggio contract addendum 68, Lantz-Boggio contract addendum 69, Lantz-Boggio contract addendum 70, Lantz-Boggio contract addendum 71, Lantz-Boggio contract addendum 72, Lantz-Boggio contract addendum 73, Lantz-Boggio contract addendum 74, Lantz-Boggio contract addendum 75, Lantz-Boggio contract addendum 76, Lantz-Boggio contract addendum 77, Lantz-Boggio contract addendum 78, Lantz-Boggio contract addendum 79, Lantz-Boggio contract addendum 80, Lantz-Boggio contract addendum 81, Lantz-Boggio contract addendum 82, Lantz-Boggio contract addendum 83, Lantz-Boggio contract addendum 84, Lantz-Boggio contract addendum 85, Lantz-Boggio contract addendum 86, Lantz-Boggio contract addendum 87, Lantz-Boggio contract addendum 88, Lantz-Boggio contract addendum 89, Lantz-Boggio contract addendum 90, Lantz-Boggio contract addendum 91, Lantz-Boggio contract addendum 92, Lantz-Boggio contract addendum 93, Lantz-Boggio contract addendum 94, Lantz-Boggio contract addendum 95, Lantz-Boggio contract addendum 96, Lantz-Boggio contract addendum 97, Lantz-Boggio contract addendum 98, Lantz-Boggio contract addendum 99, Lantz-Boggio contract addendum 100.



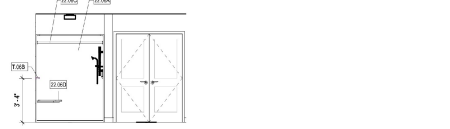
E1 BATHROOM ELEVATION
144" x 110"



E2 BATHROOM ELEVATION
144" x 110"



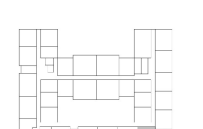
E3 BATHROOM ELEVATION
144" x 110"



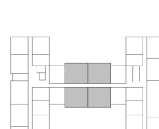
E4 BATHROOM ELEVATION
144" x 110"



E5 BATHROOM ELEVATION
144" x 110"



E6 BATHROOM ELEVATION
144" x 110"



E7 BATHROOM ELEVATION
144" x 110"



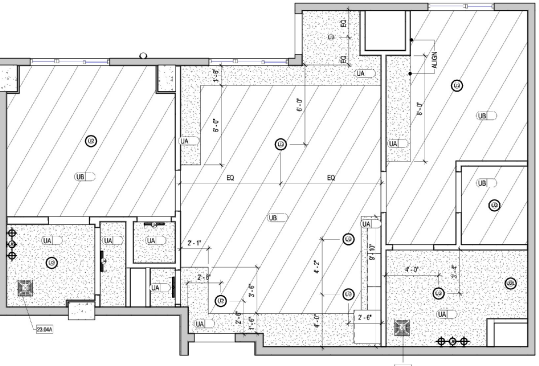
E8 BATHROOM ELEVATION
144" x 110"

KEYNOTE LEGEND	
KEYNOTE NUMBER	KEYNOTE TEXT
08.00C	VINYL BASE, RE INTERIOR FINISH LEGEND
10.00A	MELAMINE SHELF WITH ROD - TYPE A (17)
10.00A	FIXED MIRROR WITH MIRROR SHELVES, PAINTED, RE. SHEET A-684
10.00A	SPACE ALLOCATED FOR FUTURE RESIDENT'S PERSONAL SET OF DRAWERS 12"X24"
11.00A	REFRIGERATOR AND FREEZER COMBO - TYPE A
11.00A	STAINLESS STEEL SINK
11.00B	WASHER CONNECTION
12.00A	CROWN MOULDING
12.00A	WOOD CABINETS - RE. INTERIOR FINISH SCHEDULE
12.00B	TOE KICK TO MATCH CABINETS
12.00C	QUANTZ COUNTERTOP, RE. INTERIOR FINISH SCHEDULE
12.00A	HAND SHOWER AND DETERGENT LOCATED ON CONTROL WALL
22.00C	CURTAIN ROD ACCESSORY
22.00C	POSSIBLE COATED WHITE 1/2" DIA. L-SHAPED FOLD-UP SEAT
23.00A	BATHROOM FAN MECHANICAL
23.00A	VYAC SYSTEM
23.00B	ACCESS PANEL RETURN AIR GRILLE
26.00B	WALL MOUNTED CLOSET FUTURE
26.00B	DECORATIVE TOILET PAPER DISPENSER MOUNTED A MIN. OF 10" AFF AND 7" AFF IN FRONT OF TOILET TO CENTERLINE OF DISPENSER
1.00B	TOWEL BAR 2" MOUNTED 42" MAX AFF
1.00B	FRAMED BORDER OF AFF MAX TO BOTTOM OF REFLECTIVE SURFACE
1.00B	MEDICINE CABINET TO BE CENTERED ON VANITY COUNTERTOP AND 40" AFF TO BOTTOM OF CABINET

UNIT AL-D2.0
LEVEL 03&04

UNIT AL-D1.2
LEVEL 03&04

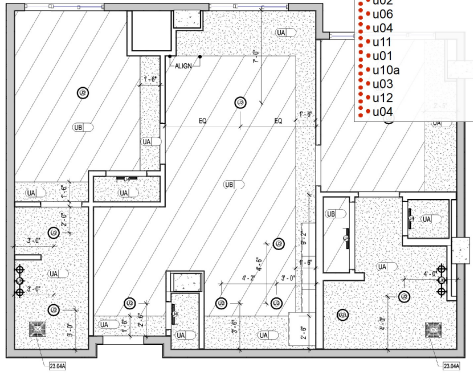
- AL-D1.2 Unit Type=EAX2
- U03
- U01
- U06
- U04
- U12
- U06b
- U20
- U06a
- U02
- AL-D2.0 Unit Type=EAX8
- U06
- U04
- U10b
- U03
- U01
- AL-D3.0 Unit Type=EAX2
- U03
- U02
- U06
- U11
- U10a
- U03
- U12
- U04



B1 UNIT PLAN AL-D3.0 RCP
144" x 110"



B3 UNIT PLAN AL-D2.0 RCP
144" x 110"



B6 UNIT PLAN AL-D1.2 RCP
144" x 110"



A1 UNIT PLAN AL-D3.0
144" x 110" 893 GSF - 2 UNITS TOTAL



A3 UNIT PLAN AL-D2.0
144" x 110" 1008 GSF - 8 UNITS TOTAL



A6 UNIT PLAN AL-D1.2
144" x 110" 896 GSF - 2 UNITS TOTAL

Item	No.	Date	Description

Project Status:	
Issue /	date
PERMIT SET	07/09/2021
50% CONSTRUCTION DOCUMENTS	05/09/2021
DESIGN DEVELOPMENT PRICING SET	04/16/2021

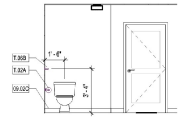
Drawn by: _____
Checked by: _____

Project Info:
LBA Project # _____ 2021.06
Date: 07/09/2021
Author: _____
Checked by: _____

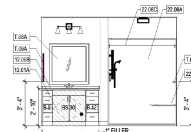
Sheet Name:
ENLARGED PLANS - INTERIOR ELEVATIONS - AL

Sheet Number:
A-732

NOTE: These documents are instruments of professional service, and information contained herein is to be used for the project only. It is the responsibility of the user to verify the accuracy of the information and to ensure that it is used in accordance with the applicable laws and regulations. The user shall indemnify and hold the architect harmless for any and all claims, damages, costs and expenses, including reasonable attorneys' fees, arising out of or from the use of these documents in whole or in part without the architect's consent in a resolution of common law, copyright, statutory and other matters. Refer to AIA 1918, § 4.1.1.1 (U.S.C. § 303.773.2436).



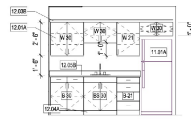
E1 BATHROOM ELEVATION
1/4" = 1'-0"



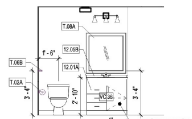
E2 BATHROOM ELEVATION
1/4" = 1'-0"



D1 WETBAR ELEVATION
1/4" = 1'-0"



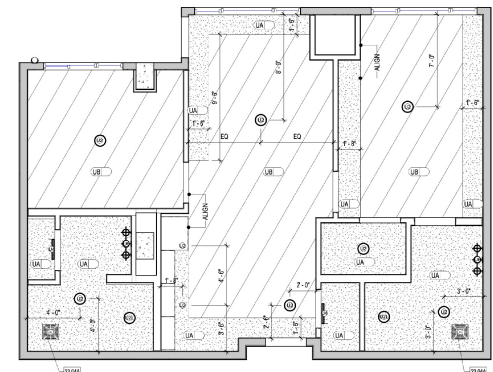
D2 WETBAR ELEVATION
1/4" = 1'-0"



B5 BATHROOM ELEVATION
1/4" = 1'-0"

- AL-B5.0 Unit Type
- U06
- U01
- U10a
- U03
- U04
- AL-D1.0 Unit Type=EAX2
- U03
- U02
- U06
- U01
- U20
- U10b
- U02
- AL-D1.1 Unit Type=EAX2
- U06
- U03
- U10b
- U01
- U20
- U03

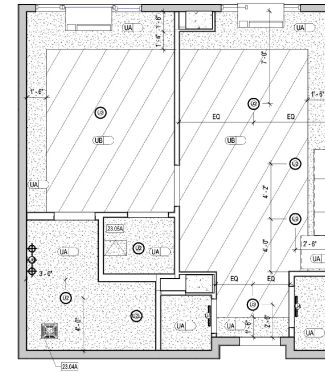
KEYNOTE LEGEND	
KEYNOTE NUMBER	KEYNOTE TEXT
08.02C	VINYL BASE, RE INTERIOR FINISH LEGEND
10.04A	MELAMINE SHELF WITH ROD - TYPE A (1/2")
10.04A	SPACE ALLOCATED FOR CLIENT'S PERSONAL SET OF DRAWERS 12"x36"x14"
11.01A	REFRIGERATOR AND FREEZER COMBO - TYPE A
11.07A	STACKING WASHER DRYER
11.07B	WASHER CONNECTION
12.01A	WOOD CABINETRY, RE INTERIOR FINISH SCHEDULE
12.02D	CROWN BY CABINET MANUF.
12.04A	TOE KICK TO MATCH CABINETRY
12.05B	QUARTZ COUNTERTOP, RE INTERIOR FINISH SCHEDULE
22.00A	HAND SHOWER AND SHOWER LOCATED ON CONTROL WALL
22.00C	CURTAIN ROD ACCESSORY
22.00D	POWDER COATED WHITE (1 1/4" DIA) L-SHAPED FOLD-UP SEAT
22.04A	BATHROOM FAHRE MECHANICAL
22.05A	20"x4" ACCESS PANEL
22.06A	VFAC SYSTEM
22.06B	ACCESS PANEL RETURN AIR GRILLE
26.17B	WALL MOUNTED CLOSET FUTURE
1.02A	COORDINATE TOILET PAPER DISPENSER MOUNTED A MIN. OF 15" AFF AND 7" AFF IN FRONT OF TOILET TO CENTERLINE OF DISPENSER
1.03B	TOWEL BAR 2" MOUNTED 42" MAX AFF
1.03B	FRAMED BORDER OF AFF MAX TO BOTTOM OF REFLECTIVE SURFACE
1.04A	MEDICINE CABINET TO BE CENTERED ON VANITY COUNTERTOP AND 40" AFF TO BOTTOM OF CABINET



B1 UNIT AL-D1.1 RCP
1/4" = 1'-0"



B3 UNIT AL-D1.0 RCP
1/4" = 1'-0"



B5 UNIT AL-B5.0 RCP
1/4" = 1'-0"



A1 UNIT PLAN AL-D1.1
1/4" = 1'-0"
873 GSF - 2 UNITS TOTAL



A3 UNIT PLAN AL-D1.0
1/4" = 1'-0"
873 GSF - 2 UNITS TOTAL



A5 UNIT PLAN AL-B5.0
1/4" = 1'-0"
821 GSF - 1 UNITS TOTAL



UNIT AL-D1.1
LEVEL 03&04



UNIT AL-D1.0
LEVEL 03&04



UNIT AL-B5.0
LEVEL 02

LANTZ-BOGGIO
Architects & Interior Designers
1880 DTC Pkwy., Suite 201 | Englewood, CO 80111 | Ph: 303.773.2436

Anthology of
WOODLAND HILLS

6033 DE SOTO AVENUE
LOS ANGELES, CA 91367

Item	No.	Date	Description

Project Status:

ISSUE /	DATE
PERMIT SET	07/09/2021
50% CONSTRUCTION DOCUMENTS	05/26/2021
DESIGN DEVELOPMENT PRICING SET	04/16/2021

Sheet Name:

ENLARGED PLANS - INTERIOR ELEVATIONS - AL

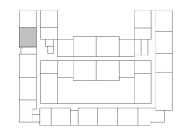
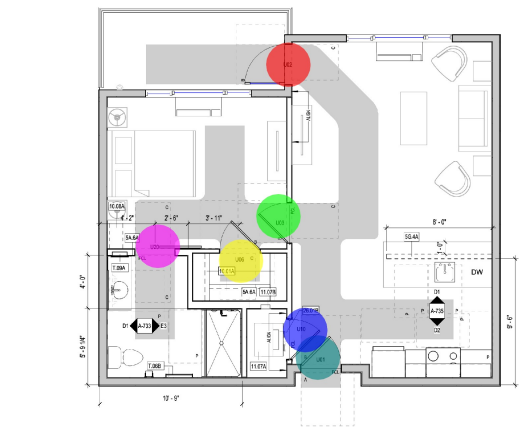
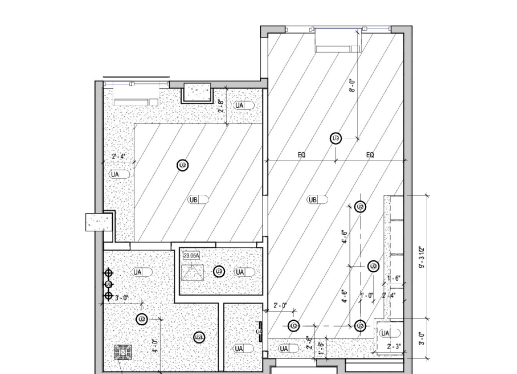
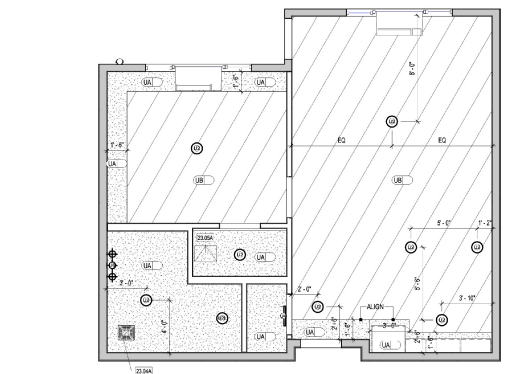
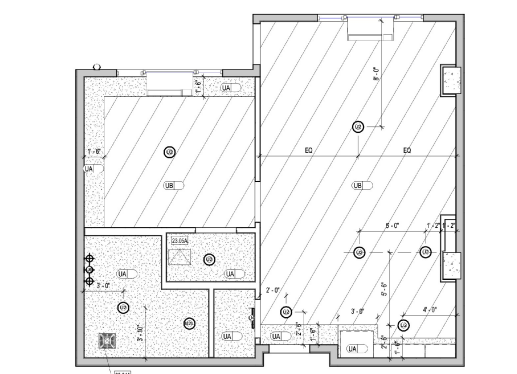
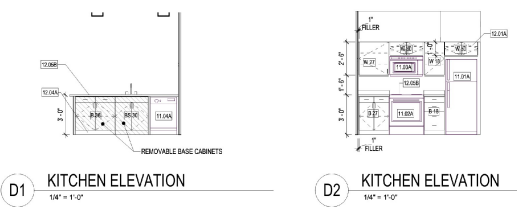
Sheet Number:

A-731

NOTE: These documents are instruments of professional service, and information contained herein is to be used for the project for which it is prepared. It is the responsibility of the user to ensure that the information is current and accurate. No representation is made by the user that the information is current and accurate. The user shall be responsible for obtaining all necessary permits and approvals. The user shall be responsible for obtaining all necessary permits and approvals. The user shall be responsible for obtaining all necessary permits and approvals.

KEYNOTE LEGEND	
KEYNOTE NUMBER	KEYNOTE TEXT
10.01A	MELAMINE SHELF WITH ROD - TYPE A (1/2")
10.02A	FIXED MELAMINE SHELVING (6" DEEP SHELVES PAINTED. RE: SHEET A-801)
10.03A	SPACE ALLOCATED FOR CLIENTS RESIDENTS PERSONAL SET OF DRAWINGS 12"x24" MAX
11.01A	REFRIGERATOR AND FREEZER COMBO - TYPE A
11.02A	RANGE WITH FRONT CONTROLS - TYPE A
11.03A	MICROWAVE HOOD - TYPE A
11.04A	DISHWASHER - TYPE A
11.05A	STACKING WASHER/DRYER
11.06A	WASHER/CONNECTOR
12.01A	WOOD CABINETS, RE: INTERIOR FINISH SCHEDULE
12.02A	TOE KICK TO MATCH CABINETS
12.03A	QUARTZ COUNTERTOP, RE: INTERIOR FINISH SCHEDULE
13.01A	BATHROOM FAN RE MECHANICAL
13.02A	20" W/ ACCESS PANEL
16.01B	WALL MOUNTED CLOSET FIXTURE
17.00	TOWEL BAR 24" MOUNTED 42" MAX APF
17.04	MEDICINE CABINET TO BE CENTERED ON VANITY COUNTERTOP LINO AND 40" AFF TO BOTTOM OF CABINET

- U01
- IL-B1.6 Unit Type=EAX3
- U10
- U02
- U06
- U03
- U04
- IL-B2.0 Unit Type=EAX6
- U02
- U01
- U06
- U03
- U20
- U10
- U01
- IL-B2.1 Unit Type=EAX3
- U10b
- U02
- U06
- U03
- U20



LANTZ-BOGGIO
Architects & Interior Designers
5865 DTC Plwy, Suite 200 | Englewood | CO 80111 | Ph: 303.773.2436

Anthology of
WOODLAND HILLS

6033 DE SOTO AVENUE
LOS ANGELES, CA 91367

Item	No.	Date	Description

Project Status:

Issue / _____ date

PERMIT SET _____ 07/09/2021

50% CONSTRUCTION DOCUMENTS _____ 05/02/2021

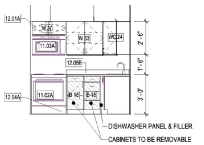
DESIGN DEVELOPMENT PRICING SET _____ 04/16/2021

Sheet Name:

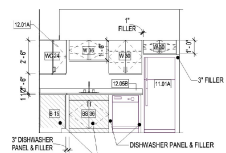
ENLARGED PLANS - INTERIOR ELEVATIONS - IL

Sheet Number:

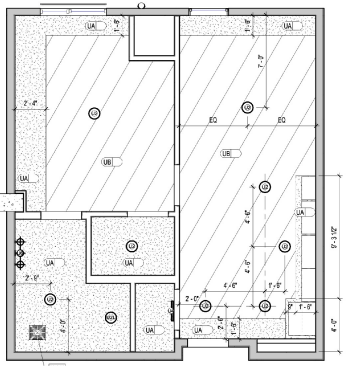
A-735



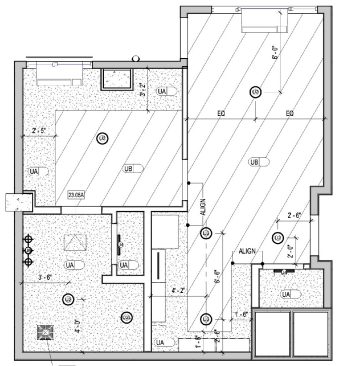
E2 KITCHEN ELEVATION
14' x 9'-0"



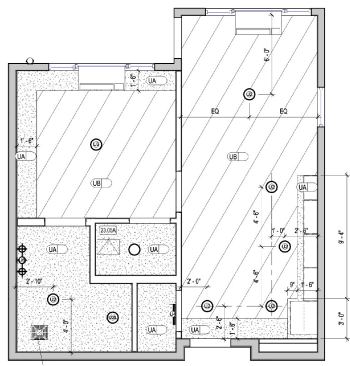
D2 KITCHEN ELEVATION
14' x 9'-0"



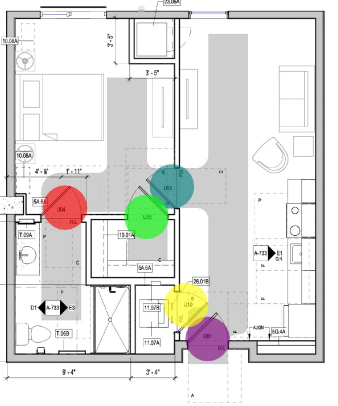
B1 UNIT IL-B1.5 RCP
14' x 9'-0"



B3 UNIT IL-B1.4 RCP
14' x 14'-0"



B5 UNIT IL-B1.3 RCP
14' x 10'-0"



A1 UNIT PLAN IL-B1.5
14' x 9'-0" 620 GSF - 4 UNITS TOTAL



A3 UNIT PLAN IL-B1.4
14' x 14'-0" 803 GSF - 3 UNITS TOTAL



A5 UNIT PLAN IL-B1.3
14' x 10'-0" 864 GSF - 3 UNITS TOTAL

- U01 1.0
- IL-B1.3 Unit Type=EAX3 0.0
- U10 1.0
- U06 1.0
- U04 1.0
- U03 1.0
- U02 1.0
- IL-B1.4 Unit Type=EAX3 0.0
- U02 1.0
- U01 1.0
- U04 1.0
- U03 1.0
- U10 1.0
- U06 1.0
- U01 1.0
- IL-B1.5 Unit Type=EAX6 0.0
- U04 1.0
- U03 1.0
- U10 1.0
- U06 1.0

KEYNOTE LEGEND	
KEYNOTE NUMBER	KEYNOTE TEXT
10L01A	MELAMINE SHELF WITH ROD - TYPE A (1/2")
10L01A	SPACE ALLOCATED FOR FUTURE RESIDENTS PERSONAL SET OF DRAWERS
11L01A	REF. KITCHEN
11L01A	REFRIGERATOR AND FREEZER COMBO - TYPE A
11L02A	RANGE WITH FRONT CONTROLS - TYPE A
11L03A	MICROWAVE / HOOD - TYPE A
11L04A	STANDING WASHMACHINE
11L05A	WASHER CONNECTION
12L01A	WOOD CABINETRY, RE. INTERIOR FINISH SCHEDULE
12L02A	TIEBACK TO MATCH CABINETRY
12L03A	QUARTZ COUNTERTOP, RE. INTERIOR FINISH SCHEDULE
12L04A	BATHROOM FAN/MECHANICAL
20L01A	20" W/ ACCESS PANEL
20L02A	V/FAC SYSTEM
30L01A	WALL MOUNTED CLOSET FEATURE
T.005	TOWEL BAR 24" MOUNTED 40" MAX AFF
T.006	MEDICINE CABINET TO BE CENTERED ON VANITY COUNTERTOP AND 40" AFF TO BOTTOM OF CABINET

Item	No.	Date	Description

Project Status:	date
PERMIT SET	07/09/2021
50% CONSTRUCTION DOCUMENTS	05/26/2021
DESIGN DEVELOPMENT PRICING SET	04/16/2021

Issue /	date

Author	Checker

Project Info:	
LBA Project #	2021_06
Date	07/09/2021
Drawn by	Author
Checked by	Checker

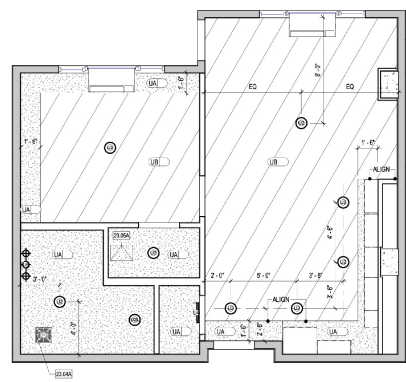
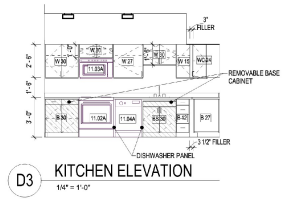
Sheet Name:	
ENLARGED PLANS - INTERIOR ELEVATIONS - IL	

Sheet Number:	
A-734	

NOTE: These documents are instruments of professional service, and information contained herein is to be used only for the project and location identified. Any reproduction or use of this information in any other project or location without the written consent of Lantz-Boggio Architects & Interior Designers is prohibited. Lantz-Boggio Architects & Interior Designers, its employees, and its agents shall not be liable for any damages, including reasonable attorneys' fees, resulting from the use of this information in any other project or location without the written consent of Lantz-Boggio Architects & Interior Designers. Rev. 11/15/2020.

NOTE: These documents are instruments of professional service, and information contained herein is to be used for the project only. No part of these documents may be reproduced, stored in a retrieval system, or transmitted in any form or by any means, electronic, mechanical, photocopying, recording, or by any information storage and retrieval system, without the prior written consent of Lantz-Boggio Architects & Interior Designers. All rights reserved.

Project Name: 7/9/2021 5:00:25 PM



KEYNOTE LEGEND	
KEYNOTE NUMBER	KEYNOTE TEXT
10L2A	MELAMINE SHELF WITH ROD - TYPE A (1/2")
10L2A	FIXED MELAMINE SHELVING (6" DEEP SHELVES PAINTED. RE: SHEET A-88)
10L2A	SPACE ALLOCATED FOR CLIENT RESIDENT'S PERSONAL SET OF DRAWINGS (12"x24")
11L2A	REFRIGERATOR AND FREEZER COMBO - TYPE A
11L2A	RANGE WITH FRONT CONTROLS - TYPE A
11L2A	MICROWAVE HOOD - TYPE A
11L2A	DISHWASHER - TYPE A
11L2A	STACKING WASHER/DRYER
11L2B	WASHER CONNECTION
20L2A	BATHROOM FAN RE MECHANICAL
20L2A	20" W/ ACCESS PANEL
20L2B	WALL MOUNTED CLOSET FIXTURE
T.08B	TOWEL BAR 24" MOUNTED AT MAX. AFF.
T.09A	MEDICINE CABINET TO BE CENTERED ON VANITY COUNTERTOP AND 30" AFF. TO BOTTOM OF CABINET

LANTZ-BOGGIO
 Architects & Interior Designers
 5885 DTC Plwy., Suite 201 (Englewood) CO 80111 | Ph: 303.773.0430

**ANTHOLOGY OF
WOODLAND HILLS**

6033 DE SOTO AVENUE
 LOS ANGELES, CA 91367

Revisions:

Item	No.	Date	Description

Project Status:

ISSUE /	DATE
PERMIT SET	07/09/2021
50% CONSTRUCTION DOCUMENTS	05/26/2021
DESIGN DEVELOPMENT PRICING SET	04/16/2021

LBA Project # 2021.06
 Date: 07/09/2021
 Drawn by: Author
 Checked by: Checker

ENLARGED PLANS -
 INTERIOR ELEVATIONS - IL

Sheet Name:
 Sheet Number:

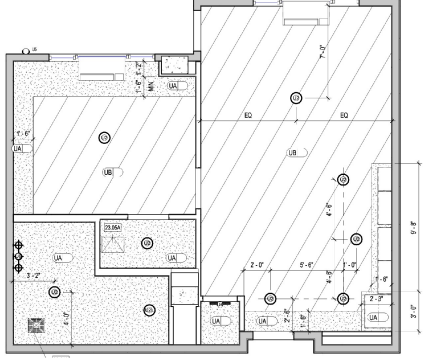
A-737

NOTE: These documents are instruments of professional service, and information contained therein is for the sole use of the recipient. No reproduction or distribution of these documents is permitted without the prior written consent of Lantz-Boggio Architects & Interior Designers. Use of reproductions of these documents in whole or in part without Lantz-Boggio's consent is a violation of common law, copyright, statutory and other reserved rights. Refer to A-11 U.S.G. and A-31 U.S.G. (8/8/98).

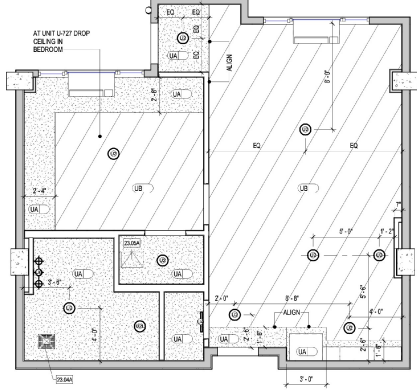
Project Date / Time Stamp: 7/9/2021 5:00:15 PM

● IL-B2.2 Unit Type=EAX9	0.0	●
● U10b	1.0	●
● U01	1.0	●
● U03	1.0	●
● U02	1.0	●
● U20	1.0	●
● U06	1.0	●
● U01	1.0	●
● IL-B2.3 Unit Type=EAX2	0.0	●
● U03	1.0	●
● U02	1.0	●
● U20	1.0	●
● U06	1.0	●
● U10a	1.0	●

KEYNOTE LEGEND	
KEYNOTE NUMBER	KEYNOTE TEXT
10L0A	MELAMINE SHELF WITH ROD - TYPE A (12')
10L0A	FIXED MELAMINE SHELVING (6'12" DEEP SHELVES, PAINTED, RE: SHEET A-88)
10L0A	SPACE ALLOCATED FOR FUTURE RESIDENT'S PERSONAL SET OF DRAWERS (2'20"X14')
11L0A	STANDING WASHER/DRYER
11L0B	WASHER CONNECTION
23L0A	BATHROOM FAN/RE MECHANICAL
23L0A	20"X4" ACCESS PANEL
26L0B	WALL MOUNTED CLOSET FUTURE
Y.00A	TUNNEL, USE 3/4" DIAMETER 1/2" WALL SET
Y.01A	MEDICINE CABINET TO BE CENTERED ON VANITY COUNTERTOP LINO AND 40" AFF TO BOTTOM OF CABINET



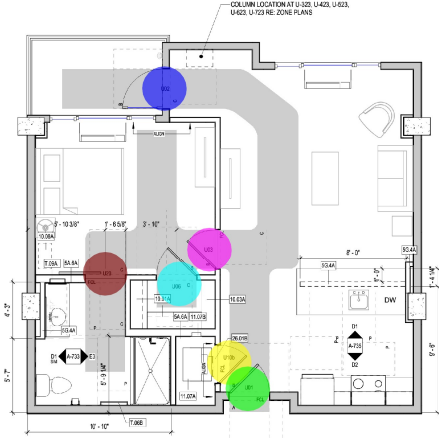
C3 UNIT IL-B2.3 RCP
1/4" = 1'-0"



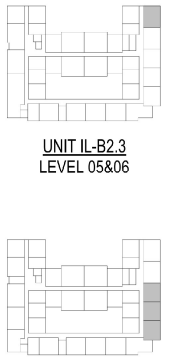
C5 UNIT IL-B2.2 RCP
1/4" = 1'-0"



A3 UNIT PLAN IL-B2.3
1/4" = 1'-0" 7/2 OSF - 2 UNITS TOTAL



A5 UNIT PLAN IL-B2.2
1/4" = 1'-0" 7/2 OSF - 9 UNITS TOTAL



UNIT IL-B2.3
LEVEL 05&06

UNIT IL-B2.2
LEVEL 05,06&07

LANTZ-BOGGIO
Architects & Interior Designers
5885 DTC Plwy., Suite 200 | Englewood, CO 80111 | Ph. 303.773.2430

ANTHOLOGY OF
WOODLAND HILLS

6033 DE SOTO AVENUE
LOS ANGELES, CA 91367

Revisions:

Item	No.	Date	Description

Project Status:

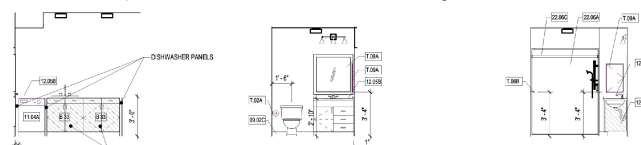
Issue /	date
PERMIT SET	07/09/2021
50% CONSTRUCTION DOCUMENTS	05/26/2021
DESIGN DEVELOPMENT PRICING SET	04/16/2021

LBA Project # 2021.06
Date: 07/09/2021
Drawn by: Author
Checked by: Checker

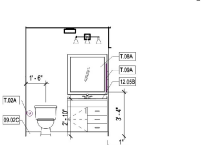
ENLARGED PLANS -
INTERIOR ELEVATIONS - IL

A-736

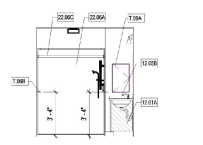
NOTE: These documents are electronic and are not intended to be used as a physical document. All drawings are the property of Lantz-Boggio Architects & Interior Designers. No reproduction or use of these documents in whole or in part without Lantz-Boggio's consent is in violation of common law, copyright, statutory and other reserved rights. Refer to A-111 S.C. per 03/11/19.



E1 KITCHEN ELEVATION
144" x 110"



E2 BATHROOM ELEVATION
144" x 110"



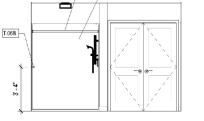
E3 BATHROOM ELEVATION
144" x 110"



E4 BATHROOM ELEVATION
144" x 110"



D1 KITCHEN ELEVATION
144" x 110"



D2 BATHROOM ELEVATION
144" x 110"



D3 BATHROOM ELEVATION
144" x 110"



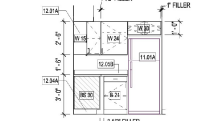
D4 KITCHEN ELEVATION
144" x 110"



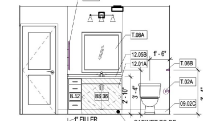
C1 KITCHEN ELEVATION
144" x 110"



C2 BATHROOM ELEVATION
144" x 110"



C4 BATHROOM ELEVATION
144" x 110"



D5 BATHROOM ELEVATION 40
144" x 110"

UNIT IL-D3.0
LEVEL 05,06&07

UNIT IL-D2.0

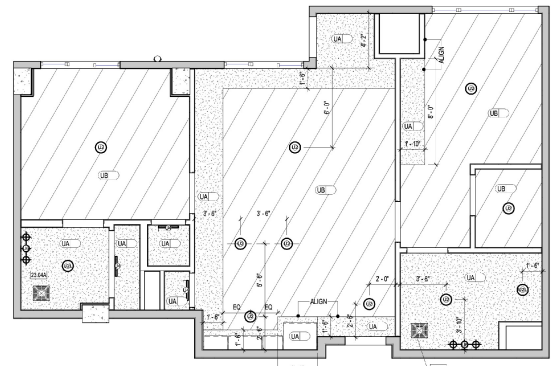
UNIT IL-D1.2
LEVEL 05&06

KEYNOTE NUMBER	KEYNOTE TEXT
09.02C	VINYL BASE, RE INTERIOR FINISH LEGEND
10.02A	MELAMINE SHELF WITH ROD - TYPE A (1")
10.02B	ROD MELAMINE SHELVING (4") 12" DEEP SHELVES PAINTED RE SHEET A.5M
10.02A	SPACES ALLOCATED FOR FUTURE RESIDENTS PERSONAL SET OF DRAWERS 12" X 24"
11.01A	REFRIGERATOR AND FREEZER COMBO - TYPE A
11.02A	RANGE WITH FRONT CONTROLS - TYPE A
11.02A	WASHER/DRYER - TYPE A
11.02A	DISHWASHER - TYPE A
11.02A	WASHER CONNECTION
12.02A	WOOD CABINETRY - RE INTERIOR FINISH SCHEDULE
12.02B	CROWN MOULDING - TYPE A
12.02A	TOE KICK TO MATCH CABINETRY
12.02B	QUANTIC COUNTERTOP, RE INTERIOR FINISH SCHEDULE
22.02A	HAND SHOWER AND CENTER LOCATED ON CONTROL WALL
22.02B	TUB SHOWER ACCESSIBLE
22.02C	CURTAIN ROD ACCESSORY
22.02A	BATHROOM FAN RE MECHANICAL
22.02A	TVAC SYSTEM
22.02B	ACCESS PANEL RETURN AIR GRILLE
22.02B	WALL MOUNTED CLOSET FEATURE
22.02B	DECORATIVE TOILET PAPER DISPENSER MOUNTED A MIN OF 15" AFT AND 7" HP IN FRONT OF TOILET TO CENTERLINE OF DISPENSER
1.02A	TONE, BE UP MOUNTED 4" MAX AFT
1.02B	FRAMED MIRROR 42" HIG MAX TO BOTTOM OF REFLECTIVE SURFACE
1.02A	MEDICINE CABINET TO BE CENTERED ON VANITY COUNTERTOP AND 40" AFT TO BOTTOM OF CABINET

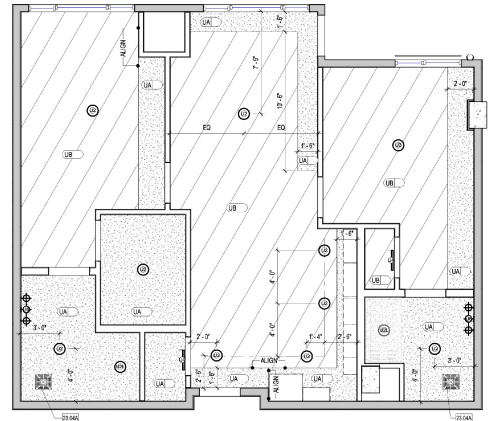
ANTHOLOGY OF
 LAND HILLS

6033 DE SOTO AVENUE
 LOS ANGELES, CA 91367

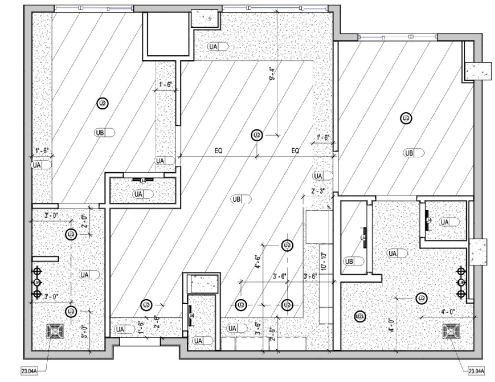
● U01	● IL-D1.2 Unit Type=EAX2	● 1.0	● 1.0
● U20	● U06a	● 0.0	● 0.0
● U06	● U03	● 2.0	● 2.0
● U03	● U12	● 1.0	● 1.0
● U12	● U06c	● 1.0	● 1.0
● U06c	● U04	● 1.0	● 1.0
● U04	● IL-D2.0 Unit Type=EAX10	● 2.0	● 2.0
● U03	● U02	● 1.0	● 1.0
● U02	● U06	● 2.0	● 2.0
● U06	● U04	● 1.0	● 1.0
● U04	● U10b	● 1.0	● 1.0
● U10b	● U01	● 1.0	● 1.0
● U01	● U01	● 1.0	● 1.0
● U01	● IL-D3.0 Unit Type=EAX3	● 0.0	● 0.0
● U03	● U03	● 2.0	● 2.0
● U02	● U06	● 1.0	● 1.0
● U06	● U04	● 2.0	● 2.0
● U04	● U12	● 1.0	● 1.0
● U12	● U11	● 1.0	● 1.0
● U11	● U10a	● 1.0	● 1.0



B1 UNIT IL-D3.0 RCP
144" x 110"



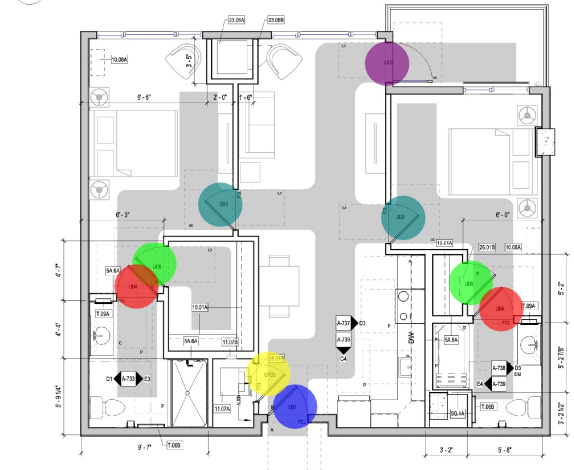
B3 UNIT IL-D2.0 RCP
144" x 110"



B5 UNIT IL-D1.2 RCP
144" x 110"



A1 UNIT PLAN IL-D3.0
144" x 110" 803 GSF - 3 UNITS TOTAL



A3 UNIT PLAN IL-D2.0
144" x 110" 1912 GSF - 10 UNITS TOTAL



A5 UNIT PLAN IL-D1.2
144" x 110" 861 GSF - 2 UNITS TOTAL

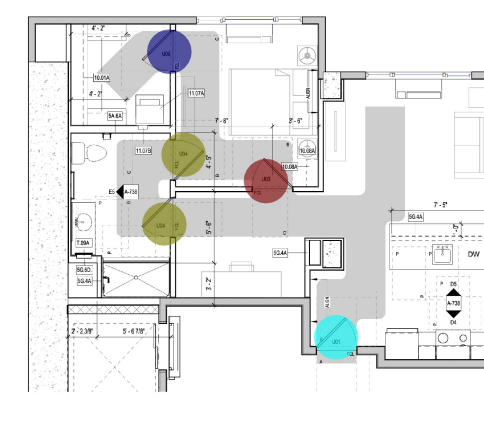
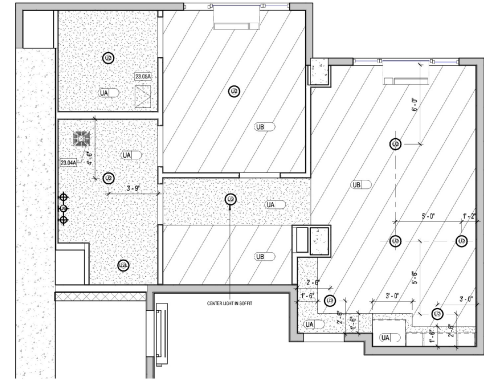
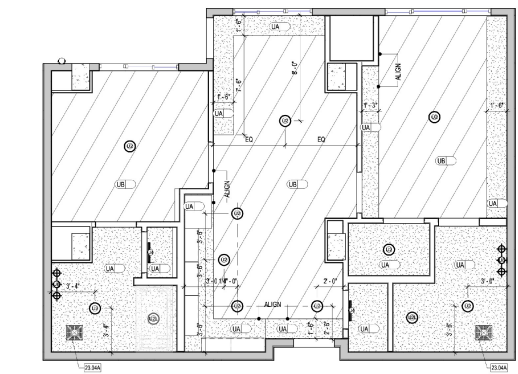
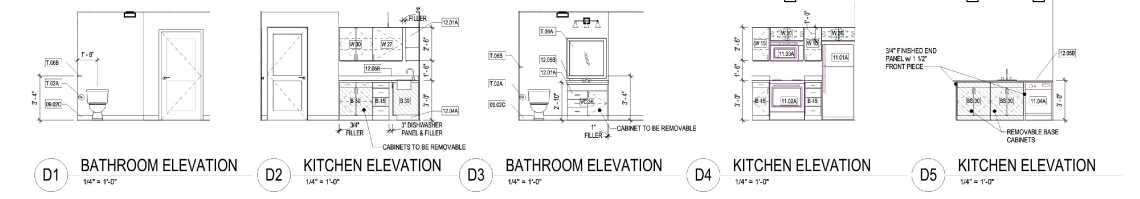
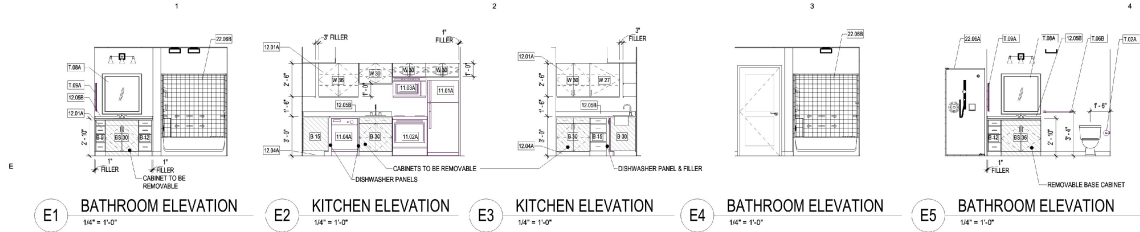
PERMIT SET	07/09/2021
50% CONSTRUCTION DOCUMENTS	05/02/2021
DESIGN DEVELOPMENT PRICING SET	04/16/2021

Project Info:	
LBA Project #	2021.06
Date:	07/09/2021
Drawn by:	Author
Checked by:	Checker

ENLARGED PLANS - INTERIOR ELEVATIONS - IL

A-739

NOTE: These documents are instruments of professional service, and information contained herein is to be used for the specific project and site only. No part of these documents may be reproduced, stored in a retrieval system, or transmitted in any form or by any means, electronic, mechanical, photocopying, recording, or by any information storage and retrieval system, without the prior written permission of Lantz-Boggio Architects & Interior Designers. All rights reserved.



KEYNOTE LEGEND	
KEYNOTE NUMBER	KEYNOTE TEXT
08.02C	VINYL BASE, RE INTERIOR FINISH LEGEND
10.02A	MELAMINE SHELF WITH HCD - TYPE A (1/2")
10.02A	SPACE ALLOCATED FOR CLIENT'S PERSONAL SET OF DRAWERS 12"x24"x14"
11.01A	REFRIGERATOR AND FREEZER COMBO - TYPE A
11.02A	RANGE WITH FRONT CONTROLS - TYPE A
11.03A	MICROWAVE/HOOD - TYPE A
11.04A	DISHWASHER - TYPE A
11.07A	STANDING WASHERS/DRYER
11.07B	WASHER/CONNECTOR
12.01A	WOOD CABINETRY, RE: INTERIOR FINISH SCHEDULE
12.02A	TOILET KICK TO MATCH CABINETRY
12.02B	QUARTZ COUNTERTOP, RE: INTERIOR FINISH SCHEDULE
22.02A	HAND SHOWER AND DIVERTER LOCATED ON CONTROL WALL
22.02B	TUB SHOWER ACCESSIBLE
23.02A	BATHROOM FAN/MECHANICAL
23.02A	30"x30" ACCESS PANEL
23.02A	VTA/C SYSTEM
23.02B	ACCESS PANEL/RETURN AIR GRILLE
23.02B	WALL MOUNTED CLOSET FEATURE
Y.02A	DECORATIVE TOILET PAPER DISPENSER MOUNTED A MAX OF 10" AFF AND 7'-0" IN FRONT OF TOILET TO CENTER LINE OF DISPENSER
Y.02B	TOWEL BAR 24" MOUNTED 42" MAX AFF
Y.02A	FRAMED MIRROR 40" AFF MAX TO BOTTOM OF REFLECTIVE SURFACE
Y.02A	MEDICINE CABINET TO BE CENTERED ON VANITY COUNTERTOP AND 40" AFF TO BOTTOM OF CABINET

- IL-B3.0 Unit Type=EAX3
- U03
- U01
- U06
- U04
- U01
- IL-D1.0 Unit Type=EAX3
- U10b
- u03
- u06
- u02
- u04
- IL-D1.1 Unit Type=EAX3
- u10b
- u01
- U06
- u03
- U20
- U02

Color	Description
0.0	
1.0	
2.0	
3.0	
4.0	
5.0	
6.0	
7.0	
8.0	
9.0	
10.0	
11.0	
12.0	
13.0	
14.0	
15.0	
16.0	
17.0	
18.0	
19.0	
20.0	
21.0	
22.0	
23.0	
24.0	
25.0	
26.0	
27.0	
28.0	
29.0	
30.0	
31.0	
32.0	
33.0	
34.0	
35.0	
36.0	
37.0	
38.0	
39.0	
40.0	
41.0	
42.0	
43.0	
44.0	
45.0	
46.0	
47.0	
48.0	
49.0	
50.0	

LANTZ-BOGGIO
 Architects & Interior Designers
 1805 DTC Way, Suite 201 (Englewood) CO 80111 | Ph: 303.773.2430

ANTHOLOGY OF LLS

6033 DE SOTO AVENUE
 LOS ANGELES, CA 91367

Project Status:	Issue /	Date
PERMIT SET		07/09/2021
50% CONSTRUCTION DOCUMENTS		05/26/2021
DESIGN DEVELOPMENT PRICING SET		04/16/2021

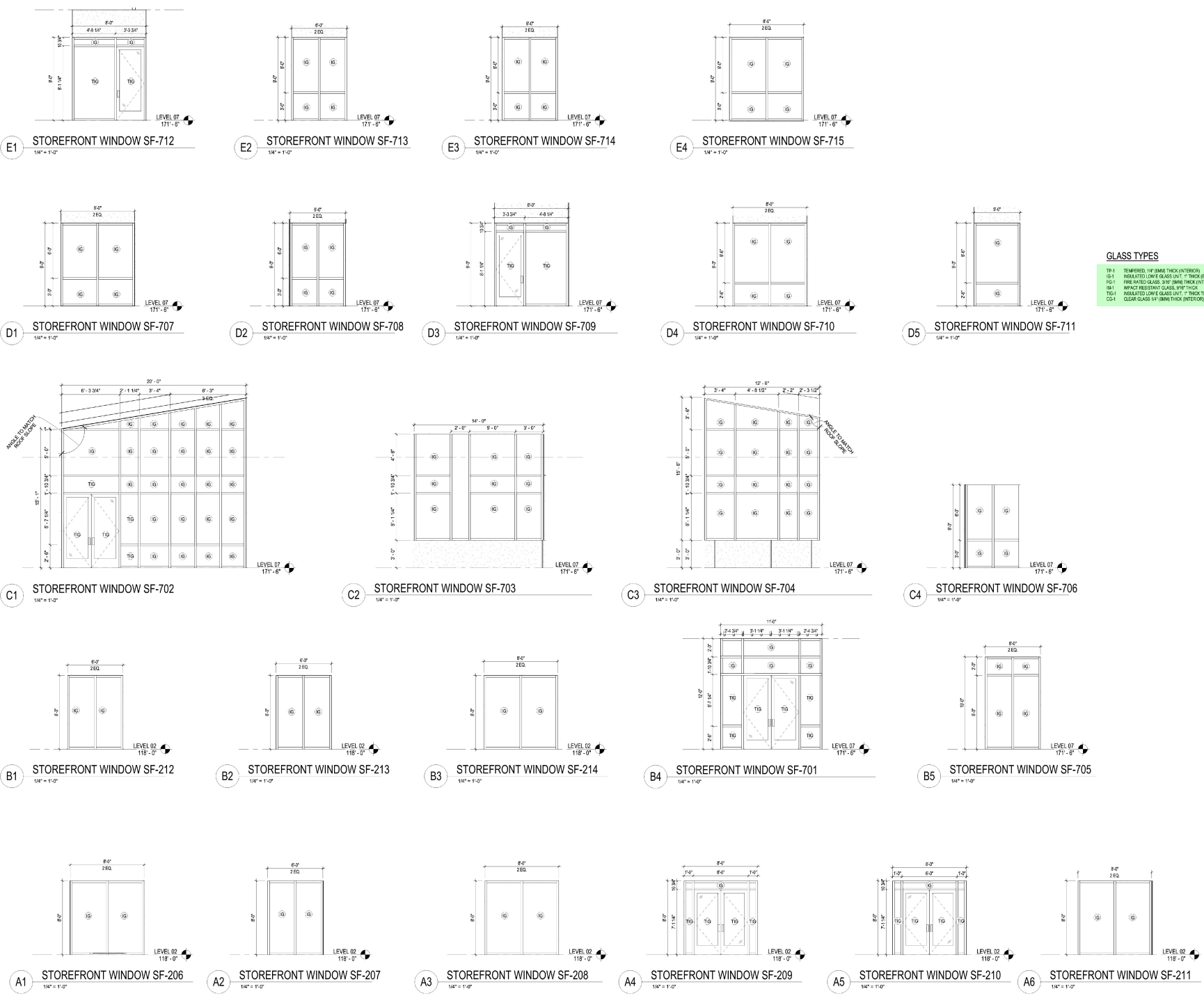
LBA Project # 2021.06
 Date: 07/09/2021
 Drawn by: Author
 Checked by: Checker

ENLARGED PLANS - INTERIOR ELEVATIONS - IL

Sheet Number:

A-738

NOTE: These documents are instruments of professional service, and information contained herein is to be used in conjunction with Lantz-Boggio's representations, disclosures, covenants and other terms and conditions. Use or reproduction of these documents in whole or in part without Lantz-Boggio's consent is a violation of common law, copyright, statutory and other reserved rights. Refer to A-111 U.S.C., sec. 111 (1998), which prescribes state and local public records act. Refer to A-111 U.S.C., sec. 301 (1991).
 Plot Date / Time Stamp: 7/20/2021 4:50:48 PM



GLASS TYPES

- TG-1 TEMPERED 1/4" ANNE THICK (OUTDOOR)
- IG-1 INSULATED LOW E GLASS UNIT 1" THICK (EXTERIOR)
- IG-2 INSULATED LOW E GLASS UNIT 1" THICK (INTERIOR)
- IG-3 FIRE RATED GLASS 3/8" (MIN) THICK (OUTDOOR)
- IG-4 IMPACT RESISTANT GLASS 3/8" THICK
- TG-2 INSULATED LOW E GLASS UNIT 1" THICK TEMPERED (EXTERIOR)
- CG-1 CLEAR GLASS 1/4" (MIN) THICK (INTERIOR)

**ANTHOLOGY OF
WOODLAND HILLS**
 6033 DE SOTO AVENUE
 LOS ANGELES, CA 91367

Revisions:

Item	No.	Date	Description

Project Status:

Issue /	Date
PERMIT SET	07/09/2021
50% CONSTRUCTION DOCUMENTS	05/26/2021
DESIGN DEVELOPMENT PRICING SET	04/16/2021

Sheet Info:

LBA Project #	2021.06
Date:	07/09/2021
Drawn by:	Author
Checked by:	Checker

WINDOW AND
 STOREFRONT TYPES

Sheet Number:

A-922